

# SEARS

FALL AND WINTER 1960

*Now... as for nearly four generations...  
Satisfaction Guaranteed*



INDEX STARTS ON PAGE 731 IN BLUE SECTION

SEARS, ROEBUCK AND CO., CHICAGO 7, ILLINOIS  
*Satisfaction guaranteed or your money back*



# ITALIAN IMPORTS



**1** The Wonderful Sweater-Shirt . . . as continental and distinctive as Venice. Masterfully hand-loomed and full fashioned in fine, 100% virgin wool. Dry clean.

His. *State size* small (34-36 in. chest), medium (38-40), large (42-44).

V33 H 1798— White with charcoal gray  
Shipping weight 1 lb. 11 oz. . . . . \$13.70

Hers. *State size* 34, 36, 38, 40.

V7 H 8074— White with charcoal gray  
Shipping weight 1 lb. 4 oz. . . . . 12.70

**2** The "Tandem-Cardigan" in a handsome, textured knit of 100% virgin wool, hand-loomed, full fashioned. Rib-knit trim. Dry clean.

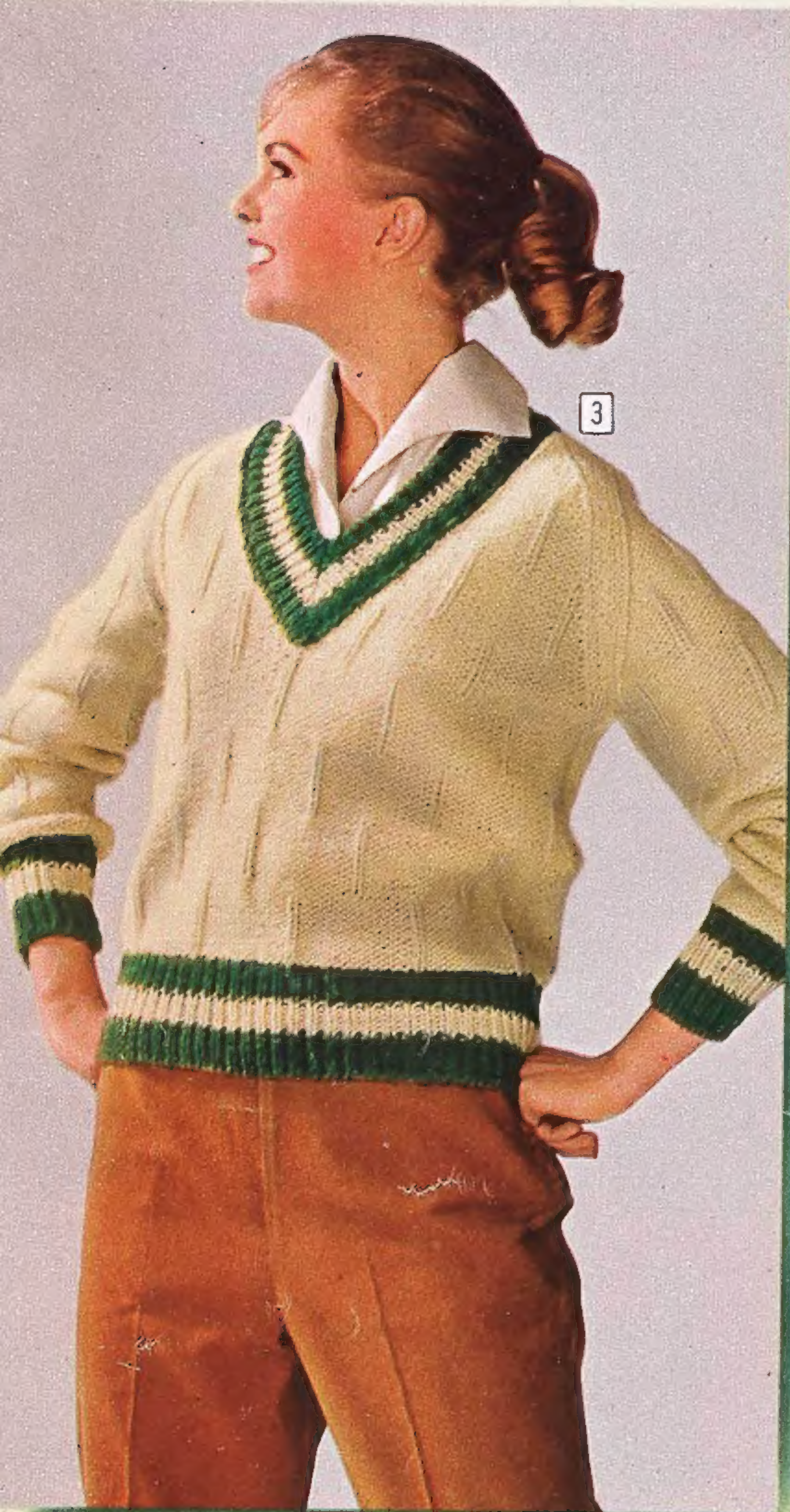
His. *State size* small (36-38 in. chest), medium (40-42), large (44-46). Shpg. wt. 2 lbs. 4 oz.

V33 H 2010— Copper  
V33 H 2011— White . . . . . \$15.70

Hers. *State size* 34, 36, 38, 40. Her scarf sold on page 40. Shipping weight 1 lb. 14 oz.

V7 H 8072— Copper  
V7 H 8073— White . . . . . \$14.70

MEASURE AND BE SURE . . . see Misses' sweater measurement chart, page 34; Men's, page 693.



3



4

5

3 The Nubby Textured . . . 100% virgin wool; handloomed and full fashioned. An Italian version of the timeless pullover with contrasting trim. Dry clean. Shipping weight 1 lb. 6 oz. Sizes 34, 36, 38, 40. State size. C7 H 8076—Beige with green . . . . . \$12.90

4 The Cable Knit . . . hand-loomed and full fashioned of 100% virgin wool. Italian sweater-jacket with 3/4 sleeves; rib-knit collar, cuffs and band. Dry clean. Shpg. wt. 1 lb. 10 oz. Sizes 34, 36, 38, 40. State size. C7 H 8079—Blue C7 H 8080—White . . . \$11.90

5 The Novelty Ribbed . . . hand-loomed and full fashioned of 100% virgin wool. Superb Italian pullover with chic wing collar, V-neckline, long sleeves. Dry clean. Shpg. wt. 1 lb. 6 oz. Sizes 34, 36, 38, 40. State size. C7 H 8077—Red C7 H 8078—White . . \$10.90

6 The Dramatic Bulky . . . hand-knit of mohair, wool and nylon. A fabulous Italian pullover with a luxury look. Wide collar, long sleeves. Full fashioned. Dry clean. Hat sold on page 35. Shipping weight 1 lb. 4 oz. Sizes 34, 36, 38, 40. State size. C7 H 8075—Wood violet . . . . . \$12.90



6



## Make GRAY the basis of a smart wardrobe

*Solid or glen plaid wool flannel mixers. Dry clean. Coordinating tops*



- 1** Misses' sizes 8, 10, 12, 14, 16.  
Please state correct size.

**Glen Plaid Vestee.** Double button triangular side closing. Waist length. Shipping weight 5 oz.

V7 H 6593—Gray and red... \$4.97

**Tailored Shirt.** Placket-detailed button front, wide collar, ¾ sleeves. Washable, crease-shy combed cotton broadcloth. Shpg. wt. 5 oz.

V7 H 6595—White... \$3.97

**Glen Plaid Skirt.** Ruler-slim with a back pleat. Seat-lined. Side zipper. Shipping weight 9 oz.

V7 H 6594—Gray and red... \$5.97

**8**

**7** High-dome Cloche Hat. Wool felt with gros-grain trim. State color all red, black, beige; or med. gray with dk. gray band. Wt. 14 oz.

N78 H 2680—Fits 21¼ to 22½ in. .... \$3.47

**2** Brushed Pullover. Mock turtleneck. Rib knit. Hi-bulk Turbo Orlon® acrylic. Hand wash. No belt. State misses' size 34, 36, 38, 40. Wt. 14 oz.

V7 H 6591—Cranberry red... \$5.97

**3** Glen Plaid Slacks gently tapered. Side seam pocket, side zipper.

State Misses' size 8, 10, 12, 14, 16. Shpg. wt. 11 oz.

V7 H 6592—Gray and red... \$7.97

**4** Bulky Pullover. Rib-knit trim. ¾ sleeves. Full fashioned. 100% Mitin® wool . . moth-proofed. Hand wash. From Japan. State size 34, 36, 38, 40. Shpg. wt. 1 lb.

V7 H 6600—White. \$8.80

**5** Slim Skirt with front seam detail, pleat. Seat-lined. Side zipper.

State Misses' size 8, 10, 12, 14, 16.

V7 H 6599—Shpg. wt. 12 oz. Oxford gray... \$5.97

- 6** Misses' sizes 8, 10, 12, 14, 16.  
Please state correct size.

**Cardigan Jacket.** Mock pocket flaps, novelty buttons. Shpg. wt. 9 oz.

V7 H 6597—Oxford gray... \$7.97

**Striped Shirt.** Rounded collar, cuffed long sleeves. Crease-resistant cotton broadcloth. Hand wash separately. Shpg. wt. 5 oz.

V7 H 6598—Gray and red... \$3.97

**Crisply Pleated Skirt** with a 2-in-1 belt that combines self fabric with mock leather. Side zipper. Shipping weight 1 lb. 2 oz.

V7 H 6596—Oxford gray... \$8.97

**8** Barrel Bag. Smart casual in soft top-grain cowhide. Zip pocket. Lined. About 10x6 in. 10% fed. exc. tax incl. Shpg. wt. 1 lb. 12 oz.

88 H 606E—Black 88 H 607E—Basque red. \$7.97

# Mary Lewis IMPORTS from ENGLAND

Exquisite wools . . tailored in the best English tradition, with notable workmanship and a flair for purebred, timeless fashion.

State Misses' size 10, 12, 14, 16, 18



- 1** Paisley Print Shirt of 100% Rayon Challis that looks like wool. Convertible collar.  $\frac{3}{4}$ -length sleeves with adjustable, two-button closing. Dry clean. Shpg. wt. 11 oz.  
 C7 H 6548—Green print as shown  
 C7 H 6549—Rust print as shown. *Sizes above* . . . . . \$8.90
- 2** Slim Slacks have tapered trouser legs with side slits. Side seam pocket and side zipper. Dry clean.  
 C7 H 6546—Sage green  
 C7 H 6547—Copper rust. *Sizes above*. Shpg. wt. 14 oz. \$14.90
- 3** Cardigan Jacket with diamond-shaped pockets. Unlined; all seams bound. Dry clean. Wt. 1 lb. 3 oz.  
 C7 H 6540—Sage green  
 C7 H 6541—Copper rust. *Sizes above* . . . . . \$29.90
- 4** Nubby-textured Plaid Skirt is pencil-slim. Seat lined. Back pleat. Side zipper. Dry clean. Shpg. wt. 13 oz.  
 C7 H 6544—Sage green and lavender  
 C7 H 6545—Copper rust and sage green. *Sizes above*.. \$15.90
- 5** Beautifully Designed Skirt with front off-center detail and pleat. Seat-lined. Side zipper. Dry clean.  
 C7 H 6542—Sage green  
 C7 H 6543—Copper rust. *Sizes above*. Shpg. wt. 13 oz. \$13.90



**Worsted Wool Plaid.** High-rise waist; tunnel belt loops; self belt. Two pockets. Side zipper. Dry clean. Misses' sizes 8, 10, 12, 14, 16, 18. State size. Shpg. wt. 1 lb. V7 H 1019—Color as shown... **\$8.80**



**Wash 'n' Wear Plaid . . . Wis-tar®** by Deering Milliken (Arnel® triacetate and rayon). Self belt. Hidden side zipper. Washable; drip-dry. Misses' sizes 8, 10, 12, 14, 16, 18. State size. V7 H 1017—Color as shown. Shipping weight 1 lb.... **\$4.80**



**Colorfully Striped Wool Capri** pants. Waistband tab at side zipper. Two button-hole style pockets. Tapered-leg styling with slits at side. Dry clean. Misses' sizes 8, 10, 12, 14, 16, 18. State size. Shpg. wt. 1 lb. V7 H 815—Color as shown. **\$6.97**



**Woven Cotton Plaid.** High-rise waist, self belt. Pockets; hidden side zipper. Washable, drip dry; touch-up iron. Misses' sizes 8, 10, 12, 14, 16, 18. State size. Shpg. wt. 1 lb. V7 H 1013—Color as shown... **\$3.77**



**Nubby Cotton Corduroy . . .** plaid print. High-rise waist, self belt. Pockets; concealed side zipper. Washable. Misses' sizes 8, 10, 12, 14, 16, 18. State size. Shpg. wt. 1 lb. V7 H 1015—Color as shown... **\$4.80**



**Ribbed Cotton Cord . . . wash 'n' wear.** Neolite belt. Side pocket. Side zipper. Washable. Misses' sizes 10, 12, 14, 16, 18, 20. State size. Shpg. wt. 1 lb. 7 H 835—Stone green 7 H 836—Black 7 H 837—Bone beige... **\$2.97**



**Corduroy Tapestry-look Print** of washable cotton. Slim Capri pants with high-rise waist. Neolite belt. Side zipper; side pocket. Shipping weight 1 pound. Misses' sizes 8, 10, 12, 14, 16, 18. Please state size. V7 H 912—Color as shown **\$3.97**



**Wide-Wale Corduroy . . .** cotton. Zip fly. Hand wash. State Misses' size 8, 10, 12, 14, 16, 18. Shpg. wt. 1 lb. V7 H 822—Golden glow V7 H 824—Black V7 H 823—Golden olive green... **\$5.97**



**Fine-Wale Corduroy . . .**  
washable cotton. Button-trimmed fly front. Double pockets. *State Misses' size 8, 10, 12, 14, 16.*  
V7 H 812—Smoky beige  
V7 H 813—Olive green  
Shpg. wt. 1 lb. . . . . \$4.80



**Chic Textured Plaid . . .**  
80% wool, 20% nylon. Self belt; concealed side zipper. Side pockets. Hand wash. *State Misses' size 8, 10, 12, 14, 16, 18.* Shpg. wt. 1 lb.  
V7 H 1021—Color as shown . . . \$5.80

**Our Finest Pants . . .** pure wool flannel, fully lined in rayon satin twill. Superbly tailored to give you a long-legged look. French waistband. Invisible side zipper. Slits at legs. Dry clean. *State Misses' size 8, 10, 12, 14, 16.* Shpg. wt. 1 lb.  
V7 H 817—Wood violet      V7 H 820—Black  
V7 H 818—Spice brown (medium)  
V7 H 819—Stone green (dark) . . . . . \$8.80

**Tailored Shirt . . .** fine Dacron® polyester and cotton broadcloth. Tuck in or wear outside. New-looking Bermuda collar. Washable . . . drip-dry. *Misses' sizes 8, 10, 12, 14, 16, 18. State size.*  
V7 H 4021—Light orchid      V7 H 4020—White  
V7 H 4022—Honey gold . . . Shpg. wt. 7 oz. . . \$4.80

Three-eyelet pouch tie. ¼-inch heel. Durable Guardtex sole. Shpg. wt. 1 lb. 5 oz.  
*Sizes: B (medium) width in. 5, 5½, 6, 6½, 7, 7½, 8, 8½ and 9.*  
*State size and width.*  
54 H 7972—Black crushed leather  
54 H 7973—Gold brushed leather. \$4.77



long, lean and lined

## Relax in Cotton Knits

Textured fabric of fine combed quality. In attractive color combinations. Shrinkage controlled. Hand washable. *Misses' sizes 8, 10, 12, 14, 16, 18. Please state size.*

**Tunic Top.** Novel neckline. Self belt.  
 V7 H 6587—Soft olive green with gold  
 V7 H 6588—Charcoal gray with medium violet. Shpg. wt. 9 oz... \$4.80

**Tapered Pants.** Sleek, completely cotton lined. Side zipper. Shpg. wt. 12 oz.  
 V7 H 6589—Soft olive green  
 V7 H 6590—Charcoal gray... \$5.80

**Hip-tip Cardigan,** smartly striped.  
 V7 H 6583—Olive green and gold  
 V7 H 6584—Gray and med. violet  
 Shipping weight 7 ounces... \$4.80

**Slim Skirt.** Seat lined to stay shapely. Hidden side zipper. Shpg. wt. 6 oz.  
 V7 H 6585—Soft olive green  
 V7 H 6586—Charcoal gray... \$4.80

Do you have your "Charge Account" at Sears yet? See page 729



1

2

## Partnerships

**1 American Twosome.** Colonial print shirt coordinates with a pair of slender, back-zipped pants applied with cut-outs of blouse fabric. Shirt of washable cotton percale. 100% wool pants should be dry cleaned. *State Misses' size 8, 10, 12, 14, 16, 18.*  
 V7 H 5053—Print shirt and black pants as shown. Shpg. wt. 14 oz... \$8.97

**2 Leisure-loving Duo.** Oxford cloth top combines with striped corduroy pants. Top has side slits, a corduroy applique. Slim, tapered pants have a hi-rise waist, back zipper. All cotton; hand wash. *State Misses' size 8, 10, 12, 14, 16, 18.*  
 V7 H 5054—Beige top with striped pants as shown. Shipping wt. 1 lb... \$6.97

**High Fashion Charm Bracelet.** 7 assorted shapes, mock stones, 2 mock foreign coins. 7¼-in. chain. Price incl. 10% Fed. Exc. Tax. Gold color. *State coral or turquoise.*  
 4 H 4531E—Shpg. wt. 3 oz... \$2.00





# Constant Companions..

*You can mix or match at will  
Moth-Off wool fabric, moth-proofed  
for better wear . . dry clean*



**1** Smart Jacket-Casual . . unlined.  
Shipping weight 1 pound.

Misses' 10, 12, 14, 16, 18. State size.  
V7 H 1470—Blue plaid  
V7 H 1471—Red plaid  
V7 H 1363—Copen blue solid  
V7 H 1364—Dark gray solid  
V7 H 1369—Red solid . . . . . \$10.87  
Women's 38, 40, 42, 44. State size.  
V7 H 1475—Blue plaid  
V7 H 1476—Red plaid  
V7 H 1373—Copen blue solid  
V7 H 1374—Dark gray solid . . . \$11.87

**2** Solid Color Skirt. Two inverted  
pleats in front and back. Rayon  
seat lining. Shpg. wt. 12 oz. State size.  
Misses' sizes 10, 12, 14, 16, 18, 20.  
V7 H 4678—Copen blue  
V7 H 4679—Dark gray  
V7 H 4680—Red . . . . . \$6.87  
Women's 38, 40, 42, 44. State size.  
V7 H 4683—Copen blue  
V7 H 4684—Dark gray . . . . . \$7.87

**3** Plaid Skirt . . tunnel belt loops;  
back kick pleat. Rayon seat lining.  
Misses' sizes 8, 10, 12, 14, 16, 18.  
State size. Shipping weight 12 oz.  
V7 H 4688—Blue plaid  
V7 H 4689—Red plaid . . . . . \$7.87

**4** Knit-trimmed Jacket . . unlined.  
Wing collar converts to turtle-  
neck style. Shpg. wt. 1 lb. State size.  
Misses' sizes 8, 10, 12, 14, 16, 18.  
V7 H 1345—Copen blue  
V7 H 1346—Dark gray  
V7 H 1347—Red . . . . . \$9.87

**5** Tapered Slacks. High-rise waist,  
tunnel belt loops, self belt. 2 pock-  
ets; side zipper. Shipping wt. 1 lb.  
Misses' 8, 10, 12, 14, 16, 18. State size.  
V7 H 1147—Blue plaid  
V7 H 1148—Red plaid . . . . . \$8.87  
V7 H 1143—Copen blue solid  
V7 H 1144—Dark gray solid  
V7 H 1145—Light gray solid  
V7 H 1146—Red solid . . . . . \$7.87

MEASURE TO BE SURE

See chart for jackets on page 29, for  
skirts on page 25, for pants on page 43.

# COLOR-MATES

Skirts and Slacks of fine 2-ply 100% wool worsted. Dry clean.

Misses' sizes 10, 12, 14, 16, 18. State size.

For Women's sizes see listings below

Sweaters in coordinated colors. 100% Hi-bulk Turbo Orlon® acrylic. Hand wash.

Sizes 34, 36, 38, 40. State size.

For Larger sizes see listings below

**1** Novelty Cowl-collared Pullover.  $\frac{3}{4}$ -length raglan sleeves. Full fashioned.

V7 H 6571—Bayberry green

V7 H 6572—Copen blue. Wt. 12 oz. . . \$5.97

**2** Slim Skirt. Hip pocket, side front pleat. Self belt; seat-lined; side zipper.

V7 H 6559—Bayberry green

V7 H 6560—Copen blue. Shpg. wt. 8 oz. \$6.80

Also Women's sizes 38, 40, 42, 44. State size.

V7 H 6562—Bayberry green

V7 H 6563—Copen blue. Shpg. wt. 10 oz. \$7.80

**3** Surface Interest Pullover . . brushed and ribbed. Cowl collar. Belt not included.

V7 H 6574—Bayberry green

V7 H 6575—Copen blue. Shpg. wt. 15 oz. \$5.80

**4** Sleek, Houndstooth Check Skirt. Mock leather belt. Seat-lined. Back pleat; side zipper closing. Shipping weight 10 oz.

V7 H 6553—Green check

V7 H 6554—Blue check . . . . . \$6.97

**5** Bateau Neck Pullover. Soft brushed surface. Long sleeves. Shipping wt. 11 oz.

V7 H 6577—Green stripe

V7 H 6578—Blue stripe . . . . . \$5.97

**6** Slender Slacks, nicely tapered. Self belt. Side seam pocket. Side zipper.

V7 H 6556—Bayberry green

V7 H 6557—Copen blue. Shpg. wt. 10 oz. \$8.97

**7** Waist-length Cardigan in a lacy-look bulky knit. Wing collar.  $\frac{3}{4}$ -length sleeves.

V7 H 6565—Bayberry green

V7 H 6566—Copen blue. Shpg. wt. 1 lb. \$6.80

Also Larger sizes 42, 44, 46. State size.

V7 H 6568—Bayberry green

V7 H 6569—Copen blue. Wt. 1 lb. 3 oz. \$7.80

**8** Box Pleated Skirt. Side zipper.

V7 H 6550—Green plaid

V7 H 6551—Blue plaid. Shpg. wt. 12 oz. \$8.80

**9** Suede Pouch. Softly pleated front and back. Bracelet handle. Side zipper opening.

About 9x9 in. Unlined. Price includes 10% fed. exc. tax. Shpg. wt. 1 lb. 4 oz.

88 H 260E—Tobacco brown . . . . . \$3.97

**10** Brushed leather tie. Composition sole,  $\frac{3}{8}$ -in. heel. Shpg. wt. 1 lb. 5 oz. Please state size, width.

Sizes: AA (narrow) 6 $\frac{1}{2}$ , 7, 7 $\frac{1}{2}$ , 8, 8 $\frac{1}{2}$ , 9

B (medium) 5, 5 $\frac{1}{2}$ , 6, 6 $\frac{1}{2}$ , 7, 7 $\frac{1}{2}$ , 8, 8 $\frac{1}{2}$ , 9.

X54 H 8235—Black and tobacco brown. \$5.74





## KNIT and CORDUROY Go-together



**Villa Style Knit Pullover Shirt.** Button-down collar, turn-back cuffs, side vents. Wear tucked in or out. 2-ply combed cotton. Machine washable.

*Misses' sizes 10, 12, 14, 16. State correct size.*

7 H 6750—Gold                      7 H 6751—Black  
7 H 6752—White                    7 H 6753—Stone green  
7 H 6754—Red                      7 H 6755—Lavender  
7 H 6756—Cadet blue. Shpg. wt. 13 oz. . . . . \$3.80

**Corduroy Tapered Capri Pants . . .** washable cotton. Self belt with handsome medallion buckle included. Side zipper and pocket. Shipping weight 1 lb.

*Misses' sizes 8, 10, 12, 14, 16, 18. State size.*

7 H 839—Golden olive green      7 H 841—Gold  
7 H 842—Fawn brown              7 H 840—Black  
7 H 843—Navy blue. . . . . \$3.80

**Pouch Handbag** converts to clutch by tucking handle inside. Rayon lined. About 12x5 inches.

88 H 206E—Medium gray suede  
88 H 205E—Olive green suede  
88 H 207E—Smooth black cowhide  
Shpg. wt. 1 lb. 4 oz. 10% Fed. Exc. Tax incl. \$3.97

**Flattie with fringed vamp.** Brass color buckle. Composition sole. *State size, width.* Shpg. wt. 1 lb. 6 oz.

*Sizes: AA (narrow) width in 6½, 7, 7½, 8, 8½, 9.  
B (med.) width in 5, 5½, 6, 6½, 7, 7½, 8, 8½, 9.*

54 H 7896A—Black smooth leather  
54 H 7897A—Green suede  
54 H 7898A—Medium gray suede . . . . . \$4.77



For Shirt measurement chart  
... see page 13  
For Pants measurement chart  
... see page 43



Smart belt comes  
with pants





**IMPORTANT WOOL SKIRTS**

*proportioned for you*



All skirts scaled to fit perfectly from waist to hips, from hips to hem. Unusually well tailored with invisibly stitched French waistbands, neat hook and eye closings.

**Unpressed Pleats**, beautifully placed for a softly full look. Buttoned tab accents. Hidden back zipper. Moth-off 100% wool flannel. Dry clean. Shipping weight 1 lb. 8 oz.  
**SHORT**.. fits figures 5 ft. 2 in. and under.  
*State Misses' size* 8, 10, 12, 14, 16.  
 V7 H 4780-Rust V7 H 4781-Blue  
 V7 H 4782-Green V7 H 4783-Black. **\$9.90**  
**REGULAR**.. fits figures 5 ft. 3 in. to 5 ft. 6 in.  
*State Misses' size* 8, 10, 12, 14, 16, 18.  
 V7 H 4786-Rust V7 H 4787-Blue  
 V7 H 4788-Green V7 H 4789-Black. **\$9.90**  
**TALL**.. fits figures 5 ft. 7 in. and over.  
*State Misses' size* 10, 12, 14, 16, 18.  
 V7 H 4792-Rust V7 H 4793-Blue  
 V7 H 4794-Green V7 H 4795-Black. **\$9.90**

**Crisp Box Pleats** for a jaunty skirt. Making news with its subtle-colored plaid inspired by the tones of Indian madras. Side zipper. 100% wool Moth-off fabric. Dry clean.  
 Shipping weight 1 pound 8 ounces.  
**SHORT**.. fits figures 5 ft. 2 in. and under. *State Misses' size* 8, 10, 12, 14, 16.  
 V7 H 4702-Multicolor plaid. **\$9.90**  
**REGULAR**.. fits figures 5 feet 3 inches to 5 feet 6 inches. *State Misses' size* 8, 10, 12, 14, 16, 18.  
 V7 H 4704-Multicolor plaid. **\$9.90**  
**TALL**.. fits figures 5 ft. 7 in. and over.  
*State Misses' size* 10, 12, 14, 16, 18.  
 V7 H 4706-Multicolor plaid. **\$9.90**

**Superb Slim Styling**. Faggoting and stitching detail; fully lined; self belt; invisible side zipper. Moth-off 100% wool flannel. Dry clean. Shipping weight 1 lb. 4 oz.  
**SHORT**.. fits figures 5 ft. 2 in. and under.  
*State Misses' size* 8, 10, 12, 14, 16, 18.  
 V7 H 4708-Blue V7 H 4709-Tobacco  
 V7 H 4710-Black V7 H 4711-Green. **\$9.90**  
**REGULAR**.. fits figures 5 ft. 3 in. to 5 ft. 6 in.  
*State Misses' size* 8, 10, 12, 14, 16, 18, 20.  
 V7 H 4714-Blue V7 H 4715-Tobacco  
 V7 H 4716-Black V7 H 4717-Green. **\$9.90**  
**TALL**.. fits figures 5 ft. 7 in. and over.  
*State Misses' size* 10, 12, 14, 16, 18, 20.  
 V7 H 4720-Blue V7 H 4721-Tobacco  
 V7 H 4722-Black V7 H 4723-Green. **\$9.90**

# The Shirt Supreme

of Dacron and Cotton

\$3.86

65% Dacron® polyester, 35% Pima Cotton . . . solid broadcloth or woven gingham checks . . . crease resistant; machine washable; drip dry . . . maximum fabric shrinkage 1%. Truly carefree fashion. Buttons tinted to match; roll sleeves; choice of Bermuda or Classic collar. Shipping weight 7 ounces.

Misses' sizes 8, 10, 12, 14, 16, 18. State size.

1 Bermuda Collared Style  
in 5 solid colors

- 7 H 4038—Bright azure blue
- 7 H 4035—White
- 7 H 4036—Brass gold
- 7 H 4037—Light brass green
- 7 H 4039—Mocha tan. \$3.86

2 Classic Collared Style  
in solid colors and checks

- 7 H 4007—Mocha tan
- 7 H 4001—Light blue
- 7 H 4002—Bright azure blue
- 7 H 4003—Light brass green
- 7 H 4004—Brass gold
- 7 H 4010—Red checks
- 7 H 4011—Black checks
- 7 H 4012—Blue checks
- 7 H 4000—White
- 7 H 4005—Red . . . \$3.86



ORDER ONLY SIZES listed with each catalog number . . . for shirts in Women's sizes see pages 14 and 15

Measurement chart for Misses	for Women
Size is... 8 10 12 14 16 18	38 40 42 44
If bust is.. 31 32½ 34 35½ 37 39	41 43 45 47 in.

# The VILLA SHIRT

**\$2.87**

Fine, crease-resistant, washable combed cotton. Style features button-down collar, tab closing, roll sleeves, side vents. Shpg. wt. 7 oz. Misses' sizes 8, 10, 12, 14, 16, 18. Please state correct size.

Woven Gingham Plaid . . . treated with Scotchgard® stain repeller.  
7 H 3939—Red dominant. . . . . \$2.87

**Solid Color Broadcloth**

7 H 3964—Brass gold    7 H 3985—White    7 H 3956—Deep red  
7 H 3974—Frost green    7 H 3977—Shadow blue. . . . . \$2.87

**Woven Gingham Checks**

7 H 3926—Red and white    7 H 3925—Black and white  
7 H 3927—Gold and white. . . . . \$2.87



## The CLASSIC . . so much shirt

for so little money **\$1.86** Misses' sizes

For Women's sizes see listings below

**Bright Plaids . .** easy-care, combed cotton gingham. Wrinkle resistant fabric; washable, touch-up iron.

Misses' sizes 10, 12, 14, 16, 18. State size.

7 H 3975—Red plaid  
7 H 3976—Blue plaid

Shpg. wt. 7 oz. . . \$1.86

Women's sizes 38, 40, 42, 44. State size.

7 H 3978—Red plaid  
7 H 3979—Blue plaid

Shpg. wt. 7 oz. . . \$2.47

**Solid Colors . .** fine, combed cotton broadcloth, mercerized for better wear. Washfast. Short sleeves.

Misses' sizes 10, 12, 14, 16, 18; Women's sizes 38, 40, 42, 44.

Please state size.

Shipping weight 7 oz.

7 H 3917—Lt. blue  
7 H 3913—White

7 H 3914—Black  
7 H 3915—Red

7 H 3916—Gold. . \$1.86

**Checks . .** crease-resistant, washable cotton. Shpg. wt. 7 oz. Misses' sizes 10, 12, 14, 16, 18. State size.

7 H 3995—Red check

7 H 3996—Black check

7 H 3998—Pink check

7 H 3997—Turquoise blue check. . . . . \$1.86

Women's sizes 38, 40, 42, 44. State size.

7 H 3988—Red check  
7 H 3989—Black check. \$2.47



Mary Lewis

PIMA COTTON SHIRT

\$2.87 Misses' sizes  
Style (1) or (3)

Fine quality broadcloth . . . washfast; fabric won't shrink over 1%; little-or-no-iron; wrinkle resistant. Single needle construction at shoulder seams, arm holes.

**1** Roll Sleeve Style . . . Italian collar, paired buttons, shirt tails.

Misses' sizes (in 8 colors). State size 10, 12, 14, 16, 18.

- |                     |   |
|---------------------|---|
| 7 H 4068—Deep red   | 7 H 4050—White                              |
| 7 H 4056—Light blue | 7 H 4058—Light beige                        |
| 7 H 4065—Frost blue | 7 H 4066—Frost green                        |
| 7 H 4067—Brass gold | 7 H 4069—Lilac . . . Shpg. wt. 7 oz..\$2.87 |

Women's sizes (in 3 colors). State size 38, 40, 42, 44.

- |                     |   |
|---------------------|---|
| 7 H 3930—White      | 7 H 3934—Brass gold                     |
| 7 H 3931—Light blue | Shipping weight 7 ounces . . . . . 3.87 |

**2** Long Sleeve Style . . . Italian collar, paired buttons, shirt tails. Misses' sizes (in 3 colors). State size 10, 12, 14, 16, 18.

- |                     |   |
|---------------------|---|
| 7 H 4096—Brass gold | 7 H 4097—Frost green                      |
| 7 H 4095—White      | Shipping weight 7 ounces . . . . . \$3.87 |

**3** Versatile Overshirt (in 4 colors) has a convertible collar, roll sleeves, color-matched buttons. Can be worn tucked in. Misses' sizes 10, 12, 14, 16, 18. State size. Shpg. wt. 7 oz.

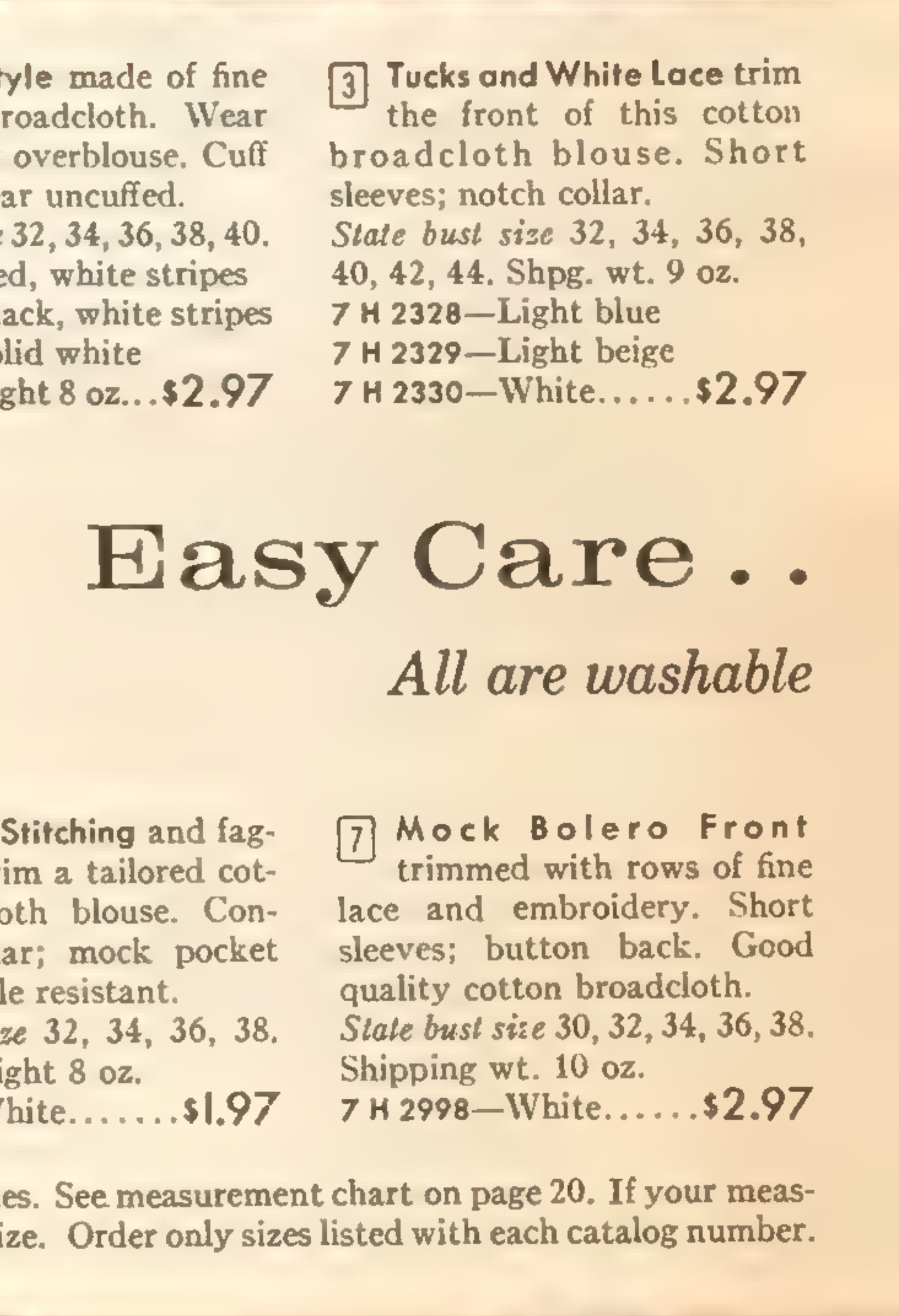
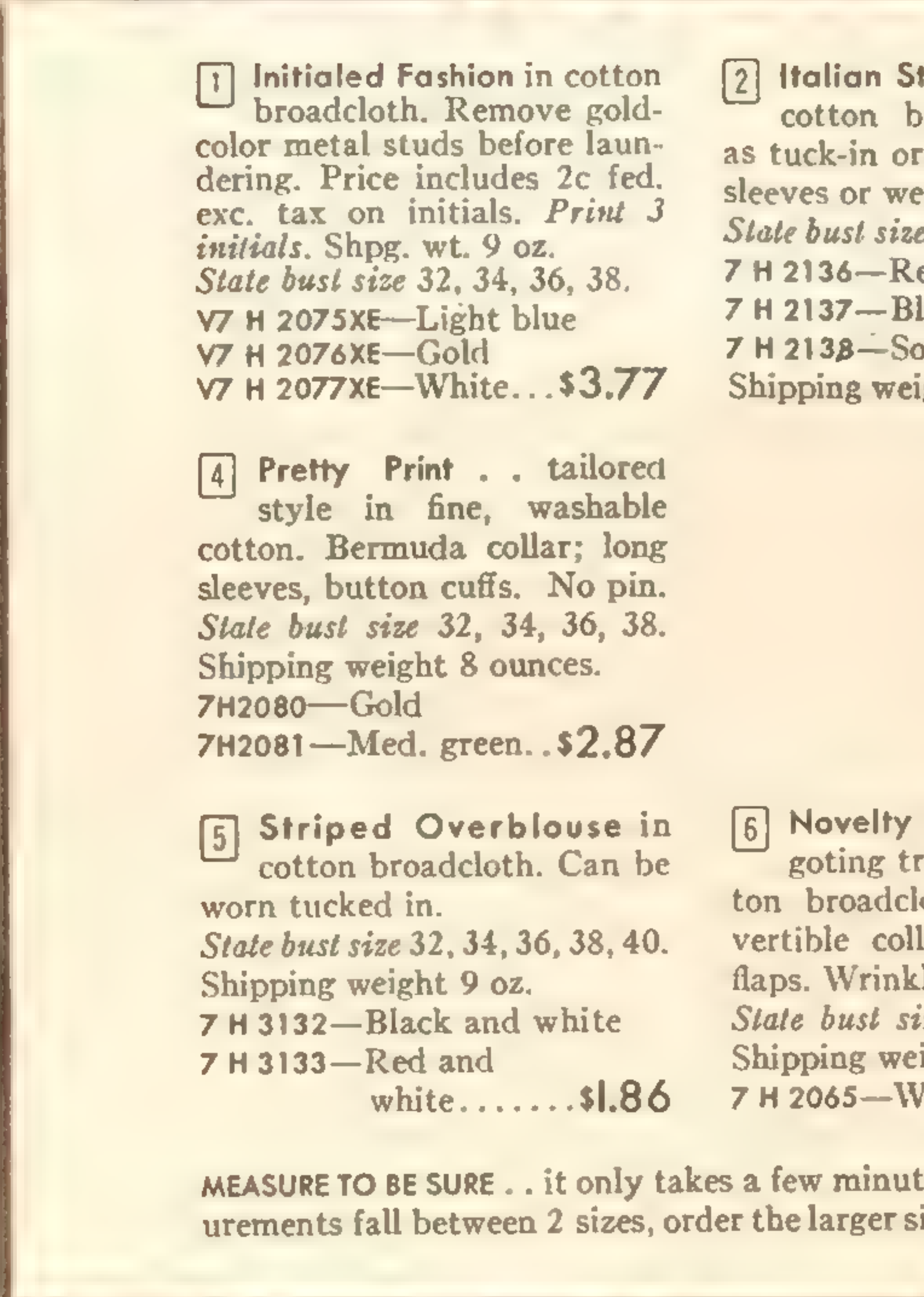
- |                     |                                       |
|---------------------|---------------------------------------|
| 7 H 3951—Light blue | 7 H 3950—White                        |
| 7 H 3954—Brass gold | 7 H 3955—Frost green . . . . . \$2.87 |

MEASURE . . . see page 13. Order only sizes listed with each catalog number.

Set of 7 Bangle Bracelets . . . in rich Florentine finish . . . provide a bright jingling accent to most any costume. Price includes 10% federal excise tax. Please state gold or silver color.

4 H 4502E—Shpg. wt. 3 oz. . . . . \$2.00





**1** Initialed Fashion in cotton broadcloth. Remove gold-color metal studs before laundering. Price includes 2c fed. exc. tax on initials. *Print 3 initials.* Shpg. wt. 9 oz. State bust size 32, 34, 36, 38. V7 H 2075XE—Light blue V7 H 2076XE—Gold V7 H 2077XE—White...\$3.77

**2** Italian Style made of fine cotton broadcloth. Wear as tuck-in or overblouse. Cuff sleeves or wear uncuffed. State bust size 32, 34, 36, 38, 40. 7 H 2136—Red, white stripes 7 H 2137—Black, white stripes 7 H 2138—Solid white Shipping weight 8 oz...\$2.97

**3** Tucks and White Lace trim the front of this cotton broadcloth blouse. Short sleeves; notched collar. State bust size 32, 34, 36, 38, 40, 42, 44. Shpg. wt. 9 oz. 7 H 2328—Light blue 7 H 2329—Light beige 7 H 2330—White.....\$2.97

**4** Pretty Print . . tailored style in fine, washable cotton. Bermuda collar; long sleeves, button cuffs. No pin. State bust size 32, 34, 36, 38. Shipping weight 8 ounces. 7H2080—Gold 7H2081—Med. green..\$2.87

**5** Striped Overblouse in cotton broadcloth. Can be worn tucked in. State bust size 32, 34, 36, 38, 40. Shipping weight 9 oz. 7 H 3132—Black and white 7 H 3133—Red and white.....\$1.86

**6** Novelty Stitching and fag-goting trim a tailored cotton broadcloth blouse. Convertible collar; mock pocket flaps. Wrinkle resistant. State bust size 32, 34, 36, 38. Shipping weight 8 oz. 7 H 2065—White.....\$1.97

**7** Mock Bolero Front trimmed with rows of fine lace and embroidery. Short sleeves; button back. Good quality cotton broadcloth. State bust size 30, 32, 34, 36, 38. Shipping wt. 10 oz. 7 H 2998—White.....\$2.97

## Easy Care . .

*All are washable*

MEASURE TO BE SURE . . it only takes a few minutes. See measurement chart on page 20. If your measurements fall between 2 sizes, order the larger size. Order only sizes listed with each catalog number.







# Mary Lewis

## PIMA COTTON SHIRT

**\$2.87** Misses' sizes  
Style (1) or (3)

Fine quality broadcloth . . . washfast; fabric won't shrink over 1%; little-or-no-iron; wrinkle resistant. Single needle construction at shoulder seams, arm holes.

**1** Roll Sleeve Style . . . Italian collar, paired buttons, shirt tails.

Misses' sizes (in 8 colors). State size 10, 12, 14, 16, 18.  
 7 H 4068—Deep red      7 H 4050—White  
 7 H 4056—Light blue    7 H 4058—Light beige  
 7 H 4065—Frost blue    7 H 4066—Frost green  
 7 H 4067—Brass gold    7 H 4069—Lilac . . . Shpg. wt. 7 oz..\$2.87

Women's sizes (in 3 colors). State size 38, 40, 42, 44.  
 7 H 3930—White      7 H 3934—Brass gold  
 7 H 3931—Light blue    Shipping weight 7 ounces . . . . . 3.87

**2** Long Sleeve Style . . . Italian collar, paired buttons, shirt tails. Misses' sizes (in 3 colors). State size 10, 12, 14, 16, 18.

7 H 4096—Brass gold    7 H 4097—Frost green  
 7 H 4095—White      Shipping weight 7 ounces . . . . . \$3.87

**3** Versatile Overshirt (in 4 colors) has a convertible collar, roll sleeves, color-matched buttons. Can be worn tucked in.

Misses' sizes 10, 12, 14, 16, 18. State size. Shpg. wt. 7 oz.  
 7 H 3951—Light blue    7 H 3950—White  
 7 H 3954—Brass gold    7 H 3955—Frost green . . . . . \$2.87

MEASURE . . . see page 13. Order only sizes listed with each catalog number.

Set of 7 Bangle Bracelets . . . in rich Florentine finish . . . provide a bright jingling accent to most any costume. Price includes 10% federal excise tax. Please state gold or silver color.

4 H 4502E—Shpg. wt. 3 oz. . . . . \$2.00





8



9



10

8 Versatile Classic of Dacron® polyester and cotton. Shipping weight 8 oz. *State bust size* 32, 34, 36, 38. V7 H 2083—Light beige  
V7 H 2084—Lt. stone green  
V7 H 2085—Lt. wood violet  
V7 H 2086—Dusty pink  
V7 H 2087—White.....\$3.97

9 Plunge Neckline Style . . cotton broadcloth. Turn-back button-cuffs. *State bust size* 32, 34, 36, 38, 40. Shipping weight 8 oz. 7 H 2088—Med. wood violet  
7 H 2089—Med. stone green  
7 H 2090—Gold  
7 H 2091—White.....\$2.97

10 Applied Lace Panels add a frilly touch to this shirt. Cotton broadcloth. Long sleeves; no cuff links. *State bust size* 30, 32, 34, 36, 38. Shipping weight 10 oz. V7 H 2093—Lt. beige  
V7 H 2094—Lt. green  
V7 H 2095—White....\$3.77

## Easy-to-wear Blouses

*just drip dry, need only touch-up ironing*

11 Contour Band Fashion of Dacron polyester and cotton. Crisp, eyelet-embroidered ruffle of cotton batiste trims the convertible neckline and front. Long sleeves have eyelet-embroidered ruffled cuffs that button at the wrists. *State bust size* 32, 34, 36, 38. Shipping wt. 8 oz. V7 H 2097—White....\$5.77

12 Lavish Embroidery trims the front and sleeves of this smart, tailored blouse. Italian collar;  $\frac{3}{4}$ -length sleeves; button cuffs. Fine quality pima cotton broadcloth. *State bust size* 32, 34, 36, 38, 40. Shipping weight 10 oz. V7 H 3188—White with lt. gray  
V7 H 3189—White with white.....\$5.97

13 Puffed Sleeve Style. Neckline and concealed front closing trimmed with colorful embroidery. Sleeves have neat button cuffs. *State bust size* 30, 32, 34, 36, 38. Shipping weight 9 oz. V7 H 3192—White with blue embroidery  
V7 H 3193—White with gold embroidery.....\$4.77



11



12



13



**The Jacket-Blouse** . . fine, vat-dyed cotton in a colorful "postage stamp" print. Long sleeves have snap closings. Washable. Shipping weight 9 oz. Bust sizes 32, 34, 36, 38. State size.  
V7 H 2001—Color as shown . . . . . \$5.77



**The Over-Blouse** . . lustrous pure silk print. A slip-over fashion with wing collar. Hand wash. State bust size 32, 34, 36, 38. Shpg. wt. 6 oz.  
V7 H 2003—Blue as shown  
V7 H 2004—Emerald green and gold . . . . . \$3.77



**The Scarf-Blouse** . . 95% rayon and 5% wool challis print. A smart overblouse with 3/4-length sleeves. Hand wash. Shipping weight 8 ounces. Bust sizes 32, 34, 36, 38. State size.  
V7 H 2005—Color as shown . . . . . \$5.97



## Our Tunics are so versatile



Our fabulous blouse comes in a choice of 5 handsome fabrics. Wear it belted, as an overblouse, or tucked in. Bust sizes 32, 34, 36, 38. Please state correct size.

**1** Pure Silk Print . . hand wash separately. V7 H 2007—Color as shown. Wt. 11 oz. . . \$8.97

**2** Batik-type Print. Fine washable cotton . . crease resistant. Ideal for wear with skirts or slacks. Shipping weight 12 oz. V7 H 2014—Color as shown . . . . . \$4.97

**5** Oxford Cloth . . washable cotton; resists wrinkles. V7 H 2011—Red V7 H 2012—White V7 H 2013—Black. Shipping weight 12 oz. . . . . \$4.47

**3** Dacron® polyester and Cotton. Riddle-song print. Hand wash; crease resistant. Wt. 12 oz. V7 H 2009—White with black . . . . . \$5.97

**4** Orlon® acrylic and Wool . . washable jersey. Shpg. wt. 12 oz. V7 H 2016—White V7 H 2017—Black. \$6.97

Ropes . . they're smart worn together or alone. Gold color metal . . 55 inch long chain. 4 H 4503E—Wt. 3 oz. Mock uniform pearls . . Hand knotted. White. 60 inches long. 4 H 4504E—Wt. 4 oz. . . . . Each \$2.00 Price includes 10% Federal Excise Tax



**Acrilan<sup>®</sup>**  
**Jersey**  
*by Allen*

- Washable; no ironing needed
- Acrylic fiber      • Retains its shape
- Resists staining    • Resists creasing

- 1 Slipover Blouse . . V-neckline edged in red and black.  $\frac{3}{4}$ -length sleeves. Shpg. wt. 9 oz. Bust sizes 32, 34, 36, 38. State size.  
 7 H 2037-White    7 H 2038-Red . . . . . \$2.97
- 2 Contour Band Fashion . . fits smoothly. Glitter buttons. Shipping weight 9 oz. Bust sizes 32, 34, 36, 38. State correct size.  
 7 H 2022-Light stone green  
 7 H 2023-Red    7 H 2024-Lt. beige . . . \$2.83
- 3 Turtleneck Style with embroidered mock-monogram. Zipper at back neckline. State bust size 32, 34, 36, 38. Shpg. wt. 8 oz.  
 7 H 2018-Red    7 H 2020-Lt. brown  
 7 H 2019-Peacock blue . . . . . \$2.97
- 4 Johnny-collared Blouse . . front closing and collar trimmed with soutache braid. State bust size 32, 34, 36, 38, 40. Shpg. wt. 8 oz.  
 V7 H 2029-Peacock blue  
 V7 H 2030-Raspberry rose  
 V7 H 2031-Black . . . . . \$3.97
- 5 Convertible Collar Blouse in a filigree-look print. Long sleeves. Shipping wt. 10 oz. Bust sizes 32, 34, 36, 38. State size.  
 V7 H 2026-Gray as shown . . . . . \$5.97
- 6 Permanent Pleats frame the neckline of this attractive blouse. Shipping wt. 8 oz. Bust sizes 32, 34, 36, 38, 40. State size.  
 V7 H 2033-Black    V7 H 2034-White  
 V7 H 2035-Royal blue . . . . . \$3.77

**MEASURE AND BE SURE**

Use chart on page 20. Order only sizes listed with each catalog number.

**Just say "Charge It" and pay later**  
 . . . see page 729





**Jewel Neckline** is set off by pretty, removable pearl-look plastic studs. Button back. Can be worn as overblouse or tuck-in style.  
*State bust size 32, 34, 36, 38.*  
 Shipping weight 8 ounces.  
 V7 H 2810—Beige  
 V7 H 2811—Black... \$5.77

**Stay-in Pleated Sleeves** add elegance to this blouse. Self buttons. Pin not included.  
*State bust size 32, 34, 36, 38.*  
 Shipping weight 11 ounces.  
 V7 H 2047—Red  
 V7 H 2048—White  
 V7 H 2049—Golden glow... \$4.97

### Washable JERSEY

80% Orlon® acrylic  
 and 20% wool

**Contour Band** assures a smooth fit for this smart fashion. 3/4 sleeves.  
*State bust size 32, 34, 36, 38.*  
 Shipping weight 8 ounces.  
 7 H 2040—Wood violet (med.)  
 7 H 2042—Black  
 7 H 2041—Golden glow (medium)... \$2.83

**Floral Embroidery** in red and green adds a pretty touch to a classic wing collar style. 3/4-length sleeves.  
*State bust size 32, 34, 36, 38, 40.*  
 Shipping weight 9 oz.  
 V7 H 2045—Medium green  
 V7 H 2044—Beige  
 V7 H 2046—White... \$3.97



## Be the Personalized blouse

Three initials or your first name in silk-stitched embroidery. Instructions, order coupon, postage-prepaid envelope with every blouse. Choose style of embroidery and color from list on coupon and send blouse or tab to our monogram service.

**1** 65% Dacron® polyester, 35% Cotton. Roll sleeve style to wear tucked in or as an overblouse. Washable, drip dry.  
*State bust size 32, 34, 36, 38.*  
 Shipping weight 9 ounces.  
 V7 H 3178—Light blue  
 V7 H 3179—Light beige  
 V7 H 3180—White... \$4.97

**2** Fine Cotton Broadcloth. A long-sleeved style with choir boy collar; detachable tab-tie. Washable; drip-dry.  
*State bust size 30, 32, 34, 36, 38.*  
 Shipping weight 9 ounces.  
 V7 H 2099—White... \$3.77

Order only sizes listed with each catalog number					
Size is....	30	32	34	36	38
if bust is....	29-30	31-32	33-34	35-36	37-38 in.
Size is....	40	42	44	46	48
if bust is....	39-40	41-42	43-44	45-46	47-48 in.
If measurements fall between two sizes, order the larger size					



**Dacron® polyester Crepe blouse** with pleated front that conceals closing. Handsome wide collar. Washable; drip-dry; little or no iron. *State bust size 32, 34, 36, 38, 40.* Shipping weight 10 ounces.  
**V7 H 2812—White..... \$5.97**

**Nylon Tricot suit blouse** traced with lovely re-embroidered nylon lace. Peter Pan collar; button back. Washable; drip-dry. *State bust size 32, 34, 36, 38, 40, 42, 44.* Shipping wt. 7 oz.  
**V7 H 2999—White..... \$6.77**



**Tucked Acetate and Nylon** makes a charming contour overblouse. Lace trim. Hand wash; drip-dry. *State bust size 32, 34, 36, 38, 40, 42, 44.* Shipping weight 8 ounces.  
**V7 H 3280—White**  
**V7 H 3281—Light blue... \$3.84**

**Printed Matté Jersey . . acetate and nylon.** Handsome wrap-tie blouse with 3/4 sleeves. Hand wash. *State bust size 32, 34, 36, 38, 40, 42.* Shipping weight 8 ounces.  
**V7 H 2939—Light brown**  
**V7 H 2940—Medium blue. \$4.97**

MEASURE TO BE SURE . . . it takes only a few minutes. See chart on opposite page; order only sizes listed with each catalog number.



**Dacron® polyester Crepe**

**"Hide-away" Neckline blouse** with matching lace trim. Button back. Washable; drip-dry, little or no iron. *State bust size 32, 34, 36, 38, 40, 42.* Shpg. wt. 8 oz.  
**7 H 3106—White**  
**7 H 3107—Light beige**  
**7 H 3108—Light pink... \$2.97**

**Jewel Neckline; button back.** Washable, needs little ironing. Shpg. wt. 7 oz.  
*Regular . . State bust size 32, 34, 36, 38.*  
**7 H 2322—Lt. pink**    **7 H 2323—White**  
**7 H 2324—Lt. green**  
**7 H 2325—Lt. blue**    **7 H 2326—Beige. \$2.97**  
*Larger . . State bust size 42, 44, 46, 48.*  
**7 H 2348—Lt. pink**    **7 H 2349—White**  
**7 H 2351—Lt. blue**    **7 H 2350—Beige. \$3.47**

**Pure Silk Broadcloth**

Smartly tailored shirtwaist with French cuffs, button links. Wear tucked in or out. Hand washable.  
*Please be sure to state bust size 32, 34, 36, 38.* Shipping weight 8 ounces.  
**V7 H 3195—Powder blue**  
**V7 H 3196—Light gold**  
**V7 H 3197—Fuchsia rose**  
**V7 H 3198—White**  
**V7 H 3199—Dark brown... \$6.97**





1

2

3

4



5

1 Box-pleated Skirt is young and spirited. Pleats are stitched down to the hip for smooth fit, swing out below. 100% wool. Side zipper. Dry clean. Shipping weight 1 lb. 8 oz. Misses' sizes 6, 8, 10, 12, 14, 16. State size. V7 H 4657—Red, green and black plaid.....\$7.97

2 Shaggy Surface Skirt. 70% wool and 30% mohair. Self belt, side zipper. Dry clean. Shpg. wt. 1 lb. 4 oz. Misses' sizes 10, 12, 14, 16, 18. Please state size. V7 H 4655—Green V7 H 4656—Medium gray....\$6.77

3 Cluster-pleated Skirt. Mock leather belt. Back zipper, off-centered. 80% wool, 20% nylon, Dry clean. State Misses' size 8, 10, 12, 14, 16, 18. Wt. 1 lb. 8 oz. V7 H 4653—Red, green and blue plaid.....\$7.97

4 Bold Herringbone Tweed Skirt is slim and smart with decorative tunnel loops accommodating a mock leather belt. 100% wool. Side zipper. Dry clean. Shpg. wt. 1 lb. 4 oz. Misses' sizes 10, 12, 14, 16, 18. Please state size. V7 H 4659—Beige and black tweed.....\$7.77

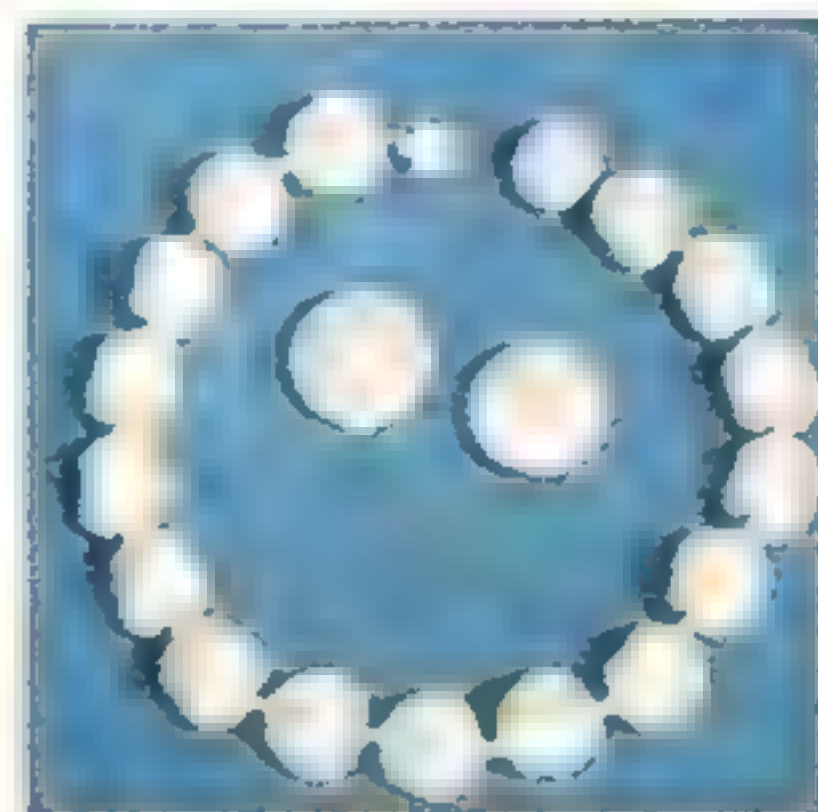
5 Brushed Skirt of 100% wool in a misty colored plaid. Unpressed pleats spread out all around. Wide leather-look plastic contour belt belittles your waist. Side zipper. Dry clean. For sweater see page 40. State Misses' size 8, 10, 12, 14, 16, 18. Shpg. wt. 1 lb. 8 oz. V7 H 4651—Tan and medium blue plaid V7 H 4650—Stone green and lilac plaid.....\$8.97

Order only sizes listed with each catalog number

SKIRT MEASUREMENT CHART FOR MISSES

If measurements fall between two sizes, order the larger size

Size is.....	6	8	10	12	14	16	18
if waist is.....	22½	23½	24½	25½	27	28½	30½ in.
if hips are.....	31½	32½	34	36	38	40	42 in.



Jumbo Baroque Mock Pearls. State white, bronze or light smoke color. Prices include 10% federal excise tax. 4 H 4511E—Large 1-inch button ear clips. Shpg. wt. 2 oz.....\$2.00 4 H 4510E—15-inch choker smart with any costume. Wt. 4 oz. 3.98



1

2

3

## Worsted Wool

Rich, fashion colors. Only such fine wool allows these glorious colorings. Exceptionally well tailored skirts with French style waistbands that show no stitching on outside. Hook and eye fasteners.

### 1 Ombre Plaid

Box-pleated all around for graceful movement or for sitting pretty. Pleats are stitched down a few inches to give smooth, bulk-free fit just below the waistline. Side zipper. Dry clean.

Misses' sizes 8, 10, 12, 14, 16, 18. Please state correct size.

V7 H 4535—Gold plaid

V7 H 4536—Blue plaid

V7 H 4537—Green plaid

Shpg. wt. 1 lb. 8 oz. . \$12.90

### 2 Bold Check

Smart touches such as the decoratively flapped pocket and the mock leather belt add to the appeal of this slender skirt. Seat lined to stay shapely. Entirely hidden back zipper. Dry clean.

Misses' sizes 10, 12, 14, 16, 18. Please state correct size.

V7 H 4545—Gold checks

V7 H 4546—Blue checks

V7 H 4547—Green checks

Shpg. wt. 1 lb. 4 oz. . \$11.90

### 3 Herringbone Weave

The silhouette is sleek, the detailing exquisitely done by hand. Note the two buttonhole-style mock pockets. Seat-lined for lasting shape retention. Completely concealed side zipper. Dry clean.

Misses' sizes 10, 12, 14, 16, 18. Please state correct size.

V7 H 4540—Gold

V7 H 4541—Blue

V7 H 4542—Green

Shpg. wt. 1 lb. 4 oz. . \$10.90



1

2

3



1

2

3



# Favorite Styles as low as \$3.77

Misses' and Womens' Sizes

A trio of trim styles in a hand washable flannel of Arnel® triacetate and rayon

**1** Lasting Box Pleats are crisply knife-edged. Side zipper. Shpg. wt. 1 lb. 4 oz. Misses' sizes 10, 12, 14, 16, 18, 20. State size. V7 H 4729-Black V7 H 4730-Med. gray V7 H 4731-Med. brown.....\$4.77 Women's sizes 38, 40, 42, 44. State size. V7 H 4830-Black V7 H 4831-Med. gray V7 H 4832-Med. brown.....\$5.47

**2** Slim Styling with a self belt, a "watch pocket" with buttoned tab trim. Back kick pleat. Side zipper. Shpg. wt. 1 lb. 4 oz. Misses' sizes 10, 12, 14, 16, 18, 20. State size. V7 H 4725-Black V7 H 4726-Med. gray V7 H 4727-Med. brown.....\$3.77 Women's sizes 38, 40, 42, 44. State size. V7 H 4822-Black V7 H 4823-Med. gray V7 H 4824-Med. brown.....\$4.47

**3** 10 Gores make a graceful flare. Self belt. Side zipper. Shipping wt. 1 lb. 8 oz. Misses' sizes 10, 12, 14, 16, 18, 20. State size. V7 H 4733-Black V7 H 4734-Med. gray V7 H 4735-Med. brown.....\$4.77 Women's sizes 38, 40, 42, 44. State size. V7 H 4826-Black V7 H 4827-Med. gray V7 H 4828-Med. brown.....\$5.47



**4** Tweed Skirt with unpressed box pleats. 80% wool, 20% nylon. Dry clean. Side zipper. Misses' sizes 8, 10, 12, 14, 16, 18. State size. Shpg. wt. 1 lb. 8 oz. V7 H 4550-Black and white V7 H 4551-Medium brown and tan.....\$5.74

**5** Glen Plaid Skirt. Smart with a pair of notched pockets, a mock leather belt. Slim as a baton, eased with a back pleat. Back zipper. 80% wool, 20% nylon. Dry clean. Misses' sizes 10, 12, 14, 16, 18. State size. Shpg. wt. 1 lb. 4 oz. V7 H 4746-Black and white \$4.77 Same style in Solid Color flannel... yarn-dyed 80% wool, 20% Dacron® polyester. Dry clean. Misses' sizes 10, 12, 14, 16, 18, 20. State size. Shpg. wt. 1 lb. 4 oz. V7 H 4748-Medium gray V7 H 4749-Medium brown \$4.77

## Plaid or Plain

**6** Full Circle Skirt takes a wide view of fashion. Quilted cotton broadcloth. Side zipper. Washable. For blouse, see page 16. Misses' sizes 8, 10, 12, 14, 16, 18. State size. Shipping weight 2 lbs. V7 H 4200-Black and white plaid V7 H 4445-Medium blue solid V7 H 4443-Black solid V7 H 4444-Red solid.....\$4.97

## The Blazer

Fine Shetland wool classic. Rayon lining. Removable emblem. Fabric treated to shed rain, stain. Dry clean. Shpg. wt. 1 lb. 4 oz. Misses' sizes 8, 10, 12, 14, 16, 18. *State size.*  
 V7 H 1348—White  
 V7 H 1349—Charcoal gray  
 V7 H 1358—Red  
 V7 H 1359—Camel  
 tan . . \$13.70



## Our Wool Flannel PROPORTIONED SKIRTS

*Scaled to fit you perfectly, from waist to hips, from hips to hemline . . fabric moth-proofed for life of garment*



**Multi-gored.** Self-belt; side zipper. Dry clean. Shpg. wt. 1 lb. 8 oz.

**SHORT . .** fits figures 5 ft. 2 in. and under. *Please state size.*  
 Misses' sizes 10, 12, 14, 16, 18.  
 V7 H 4768—Black  
 V7 H 4769—Medium gray  
 V7 H 4770—Navy blue . . . \$6.77

**REGULAR . .** fits figures 5 ft. 3 in. to 5 ft. 6 in. *State size.*  
 Misses' sizes 10, 12, 14, 16, 18, 20.  
 V7 H 4772—Black  
 V7 H 4773—Medium gray  
 V7 H 4774—Navy blue . . . \$6.77

**TALL . .** fits figures 5 ft. 7 in. and over. *Please state size.*  
 Misses' sizes 12, 14, 16, 18, 20.  
 V7 H 4776—Black  
 V7 H 4777—Medium gray  
 V7 H 4778—Navy blue . . . \$6.77

**Women's sizes.** Regular length only. *State size* 38, 40, 42, 44.  
 V7 H 4698—Black  
 V7 H 4699—Medium gray . \$7.77

**Slim.** Seat lining; belt; back pleat. Dry clean. Shpg. wt. 1 lb. 4 oz.

**SHORT . .** fits figures 5 ft. 2 in. and under. *Please state size.*  
 Misses' sizes 10, 12, 14, 16, 18.  
 V7 H 4750—Black  
 V7 H 4751—Medium gray  
 V7 H 4752—Navy blue . . . \$5.77

**REGULAR . .** fits figures 5 ft. 3 in. to 5 ft. 6 in. *State size.*  
 Misses' sizes 10, 12, 14, 16, 18, 20.  
 V7 H 4755—Black  
 V7 H 4756—Medium gray  
 V7 H 4757—Navy blue . . . \$5.77

**TALL . .** fits figures 5 ft. 7 in. and over. *Please state size.*  
 Misses' sizes 12, 14, 16, 18, 20.  
 V7 H 4760—Black  
 V7 H 4761—Medium gray  
 V7 H 4762—Navy blue . . . \$5.77

**Women's sizes.** Regular length only. *State size* 38, 40, 42, 44.  
 V7 H 4692—Black  
 V7 H 4693—Medium gray . \$6.77

**Pleated.** Designed to fit smoothly. Dry clean. Shpg. wt. 1 lb. 8 oz.

**SHORT . .** fits figures 5 ft. 2 in. and under. *Please state size.*  
 Misses' sizes 8, 10, 12, 14, 16, 18.  
 V7 H 4586—Black  
 V7 H 4587—Medium gray  
 V7 H 4588—Navy blue . . . \$6.77

**REGULAR . .** fits figures 5 ft. 3 in. to 5 ft. 6 in. *State size.*  
 Misses' sizes 8, 10, 12, 14, 16, 18, 20.  
 V7 H 4591—Black  
 V7 H 4592—Medium gray  
 V7 H 4593—Navy blue . . . \$6.77

**TALL . .** fits figures 5 ft. 7 in. and over. *Please state size.*  
 Misses' sizes 10, 12, 14, 16, 18, 20.  
 V7 H 4596—Black  
 V7 H 4597—Medium gray  
 V7 H 4598—Navy blue . . . \$6.77

**Women's sizes.** Regular length only. *State size* 38, 40, 42, 44.  
 V7 H 4695—Black  
 V7 H 4696—Medium gray . \$7.77

### MEASURE AND BE SURE

Order only sizes listed with each catalog number  
 Measurement chart for Jacket on page 29

### SKIRT MEASUREMENT CHART

#### For Misses

Size is . . .	8	10	12	14	16	18	20
If waist is . . .	23½	24½	25½	27	28½	30½	32½
If hips are . . .	32½	34	36	38	40	42	44 in.

#### For Women

Size is . . .	38	40	42	44
If waist is . . .	33½	36	38½	41 in.
If hips are . . .	42	44	46	48 in.

If measurements fall between 2 sizes, order larger size

Send no money . . . pay later on Sears Charge Plan . . . see page 729



# LEATHER..at Sears a low priced luxury

**1** **Belted Suede.** About 26 in. long. Resists water spots. Rayon lining. Dry clean. Misses' sizes 8, 10, 12, 14, 16, 18. State size. Shpg. wt. 1 lb. 12 oz.  
 V7 H 1700—Rust      V7 H 1701—Light beige .....\$23.70

**2** **Capeskin (sponge clean).** About 26 in. long. Sleeveless zip-in liner of washable cotton-backed Orlon® acrylic pile. Rayon lining. Self belt. Wt. 2 lbs. 4 oz. Misses' 8, 10, 12, 14, 16, 18. State size. Women's 38, 40, 42, 44. State size.  
 V7 H 1712—Green with green pile      V7 H 1714—Green with green pile  
 V7 H 1710—Beige with beige pile      V7 H 1713—Beige with beige pile .....\$32.90  
 V7 H 1711—White; black pile. ....\$27.90

Same style as above but without zip-in liner. Shipping weight 1 lb. 12 oz.  
 Misses' 8, 10, 12, 14, 16, 18. State size. Women's 38, 40, 42, 44. State size.  
 V7 H 1707—Green      V7 H 1705—Beige      V7 H 1709—Green  
 V7 H 1706—White .....\$23.70      V7 H 1708—Beige .....\$28.90

**3** **Topper-length Jacket** in suede or capeskin. About 29 in. long. Rayon foulard print lining. Self belt. Dry clean suede. Sponge clean capeskin. State size. Misses' 8, 10, 12, 14, 16, 18, 20. Women's 38, 40, 42, 44. State size.  
 V7 H 1715—Light beige suede  
 V7 H 1716—Rust suede  
 V7 H 1718—Light beige capeskin  
 V7 H 1719—White capeskin  
 Shipping weight 2 lbs. ...\$29.90

MEASURE TO BE SURE . . . see Jacket measurement chart on page 29

**4** **Leather Beret.** Fabric ties. Fits 21¾ to 22½ in. Shpg. wt. 8 oz.  
 N78 H 2606—Suede. State color all rust, all light beige or all black. ....\$3.97  
 N78 H 2605—Capeskin. State color all light beige, all black; or white with black ties. ....\$3.97

**5** **Silk Foulard Square.** Antique auto print. About 23x23 in. From Japan. Hand rolled. Hand wash separately. Shipping weight 1 oz.  
 88 H 8230—Beige  
 88 H 8231—Light blue .....\$1.97

**6** **Stretch Knit Gloves.** Wool and nylon. Hand wash. From Japan. Fit all sizes. Wt. pair 3 oz.  
 88H5070A—Jewel blue } 97c pr.  
 88H5071A—Pine green }  
 88H5072A—Golden glow } 2 prs. \$1.87



...love that  
**CORDUROY**

*Corduroy separates and coordinated tops are all washable cotton*

1 State Misses' size 10, 12, 14, 16, 18.

**Crop-top Jerkin.** Lined; back-but-  
toned. Removable pin. Shpg. wt. 9 oz.  
V7 H 6628—Mustard gold  
V7 H 6629—Dark stone green... \$2.80

**Picturesque Shirt** has liberty bell print.  
Bermuda collar. Crisp broadcloth.  
V7 H 6630—Print as shown.  
Shipping weight 7 ounces..... \$3.80

**Full Skirt** with unpressed pleats. Side  
zipper. Mock leather belt with novelty  
trim. Shipping weight 1 lb. 12 oz.  
V7 H 6623—Mustard gold  
V7 H 6624—Dark stone green... \$5.80

2 State Misses' size 10, 12, 14, 16, 18.

**Flared-skirt Jumper.** Scoop neck, self  
belt, back zipper. Shpg. wt. 1 lb. 3 oz.  
V7 H 5025—Cranberry red  
V7 H 5026—Black..... \$6.97

**Big Sleeve Blouse** with appliques on  
Bermuda collar. Smooth broadcloth.  
V7 H 6605—White with red trim.  
Shipping weight 7 oz..... \$3.80

3 State Misses' size 10, 12, 14, 16, 18.

**Slim Jumper.** Back zipper. Wt. 12 oz.  
V7 H 5027—Stone green  
V7 H 5028—Mustard gold ..... \$5.97

**Roll Sleeve Shirt.** Oxford cloth.  
V7 H 6633—Print as shown  
Shipping weight 8 ounces..... 2.97

4 Sporty Twosome.

**Pedal Pushers.** High-rise waist, nov-  
elty belt, side pocket and zipper.  
Misses' sizes 10, 12, 14, 16, 18, 20. State  
size. Shipping weight 13 oz.

V7 H 5300—Stone green  
V7 H 5301—Black  
V7 H 5302—Light fawn brown... \$3.80

**Knit Overshirt** with side slits.  
Misses' sizes 10, 12, 14, 16. State size.  
V7 H 6758—Multicolor stripes  
Shipping weight 13 ounces..... \$3.80

5 State Misses' size 10, 12, 14, 16, 18.

**2-piece Set.** Over-top with wing  
collar, cobbler's pockets. Tapered Capri  
pants, back zipper. Shpg. wt. 1 lb. 1 oz.  
V7 H 5051—Cadet blue  
V7 H 5052—Black..... \$5.97

6 **Corduroy Duffel Handbag.** Detach-  
able rope handles. Cotton, with  
waterproof lining. About 16x8 in. 10%  
fed. exc. tax included. Shpg. wt. 2lbs. 8 oz.

88 H 1207E—Antique gold  
88 H 1208E—Red  
88 H 1209E—Loden (med.) green \$3.57

7 **Pinwale Corduroy Oxford.** Cotton  
flannel lining. Crepe-type rubber  
sole. Foam cushion insole. Wt. 1 lb. 11 oz.  
Sizes: M (medium) width in 4 to 9.  
Half sizes too. Please state size.

76H9509A—White 76H9510A—Antique gold  
76H9547A—Red 76H9552A—Black  
76H9536A—Loden (med.) green... \$2.84





1 Orlon® Acrylic Pile, cotton backed. Acetate lining quilted to nylon batting. Cotton knit collar, cuffs. Drawstring bottom. Washable. Water repellent. Misses' sizes 8, 10, 12, 14, 16, 18. Please state size. Shpg. wt. 2 lbs. 4 oz. V7H1656—Med. loden green V7H1655—Beige V7H1657—Gold... \$11.74

2 Leather-look foam vinyl plastic, cotton backed. Rayon twill lining. 2 pockets. Sponge clean. Misses' sizes 8, 10, 12, 14, 16, 18. Please state size. Shpg. wt. 2 lbs. 8 oz. V7 H 1625—Silver blue V7 H 1623—Beige V7 H 1624—White \$12.72

3 Cotton Sateen . . white cotton knit trim. Cotton flannel lining. Water repellent. Washable. Shipping weight 1 pound. Misses' sizes 10, 12, 14, 16, 18. Please state size. V7 H 1503—Beige V7 H 1504—Light blue V7 H 1507—Stone (medium) green . . \$4.87 Women's sizes 38, 40, 42, 44. Please state size. V7 H 1508—Beige V7 H 1509—Lt. blue. \$5.87



Cotton Corduroy . . rayon-lined yoke. Dry clean. Was \$5.80 . . Misses' sizes 10, 12, 14, 16, 18. State size. V7 H 1567—Charcoal gray V7 H 1569—Deep blue V7 H 1565—Beige V7 H 1566—Red V7 H 1568—Medium moss green. Wt. 1 lb. . . \$4.97 Was \$6.80 . . Women's sizes 38, 40, 42, 44. State size. V7 H 1570—Charcoal gray V7 H 1571—Beige V7 H 1572—Medium moss green V7 H 1573—Ginger med. brown. Wt. 1 lb. . . \$5.97

Wide-wale Corduroy Pullover . . cotton. Jacket-shirt with button-tab collar. Side vents. Wash separately. For ski hood, see page 129. Shpg. wt. 1 lb. State Misses' size 8, 10, 12, 14, 16, 18. 7 H 1435—Beige 7 H 1436—Stone green (medium) 7 H 1437—Brass gold 7 H 1438—Black . . . . . \$4.77

Nylon Taffeta with nylon fleece lining; sleeves lined in nylon knit. Zipper front; elasticized side inserts for good fit. Adjustable button-cuffs. Washable. Shipping weight 1 pound 6 ounces. State Misses' size 8, 10, 12, 14, 16, 18. V7 H 1600—White V7 H 1603—Light powder blue V7 H 1602—Beige . . . . . \$7.84



For hat  
see  
hat pages

## The Continental Look

**1** Cotton Suede Hooded Style . . fabric imported from Holland. Orlon® acrylic pile lining (cotton-backed). Quilted rayon sleeve lining edged in pile. Button front closing. Dry clean. *State Misses' size 8, 10, 12, 14, 16, 18. Shpg. wt. 2 lbs. 4 oz.*  
 V7 H 1520—Taffy tan; beige pile  
 V7 H 1521—Rust; dark beige pile  
 V7 H 1522—Med. green  
 with white pile . . . . . \$15.90

**2** Knit-trimmed Poplin . . . 100% cotton with ¾ lining of Orlon acrylic pile; cotton backing. Rest of lining is rayon quilted to acetate batting. Convertible collar. Stitching detail. Dry clean. *State Misses' size 8, 10, 12, 14, 16, 18. Shpg. wt. 1 lb. 14 oz.*  
 V7 H 1605—Light beige  
 V7 H 1606—Light stone green . . . . . \$12.72

**3** Sturdy 10-Wale Corduroy . . . 100% cotton with rayon twill lining quilted to nylon batting. Beige cotton knit collar has tab closing. Leather buttons. Dry clean. *State Misses' size 8, 10, 12, 14, 16, 18. Shpg. wt. 2 lbs. 8 oz.*  
 V7 H 1616—Deep moss green  
 V7 H 1615—Light mocha beige  
 V7 H 1617—Medium mustard gold . . . . . \$12.72

Cotton Corduroy . . lined in Orlon acrylic pile, cotton backed. Pile trim. Sleeves lined with nylon batting quilted to rayon twill. Leather buttons. Dry clean. *State Misses' size 8, 10, 12, 14, 16, 18.*  
 V7 H 1610—Beige with beige pile  
 V7 H 1611—Black with med. gray pile  
 V7 H 1612—Dark green; beige pile  
 Shipping weight 2 lbs. 4 oz. . . . . \$10.97

Order only sizes listed with each catalog number

JACKET MEASUREMENT CHART											
	for Misses						for Women				
Size is . . . . .	8	10	12	14	16	18	20	38	40	42	44
If bust is . . . . .	31	32½	34	35½	37	39	41 in.	41	43	45	47 in.

If measurements fall between 2 sizes, order the larger size

No payments until later when you "Charge it" . . . see page 729



1 \$8.97



2 \$5.97



3 \$6.80



**Crew Neck Pullover.**  
Long sleeves. Soft 100% virgin Hi-bulk Orlon® acrylic. Hand washable. State size 32, 34, 36, 38, 40. Shpg. wt. 14 oz.  
7 H 8850—Heather gold (dark)  
7 H 8851—Heather violet (medium)  
7 H 8852—Heather teal green (medium)  
7 H 8854—Cornflower blue (medium)  
7 H 8853—Bright red... \$3.80

# Brushed

- 1 **Wide-striped Cardigan.** 75% virgin worsted wool, 25% mohair. Rib knit collar and trim. Hand wash. For jewelry see page 123. State size 34, 36, 38, 40. Shpg. wt. 15 oz.  
7 H 8870—Dark and light heather green... \$8.97
- 2 **Boat Neck Pullover.** Long sleeves. 75% virgin worsted wool, 25% mohair. Hand wash. State size 34, 36, 38, 40. Shpg. wt. 12 oz.  
7 H 8874—Rose heather  
7 H 8875—Heather brown (medium)  
7 H 8877—Heather green (medium)  
7 H 8876—Heather gold... \$5.97
- 3 **Sailor Collar Pullover.** 75% virgin worsted wool, 25% mohair. ¾ sleeves, two pockets. Hand wash. For jewelry see page 56. State size 34, 36, 38, 40. Shpg. wt. 15 oz.  
7 H 8879—Stone green  
7 H 8880—Mocha beige (light)  
7 H 8881—Wood violet (dark)... \$6.80



**Calf Contour Belt.** Brass buckle. Leather lined. State waist size 24, 26, 28, 30 in. About 1 in. wide. Shipping weight 4 oz.  
88 H 8175—Brown  
88 H 8176—Black... \$2.97

MEASUREMENT CHART for SWEATERS

Order only sizes listed with each catalog number					
Size is.....	32	34	36	38	40
if bust is (in.)	29-30	31-32	33-34	35-36	37-38



4 \$5.80



5 \$4.80



6 \$5.97

# Sweaters

4 **Boat Neck Fitted Pullover** of 100% virgin Hi-bulk Turbo Orlon® acrylic. Handsome argyle-patterned front makes it a stand-out for casual wear. Hand washable. Shipping wt. 14 oz. *State correct size.*  
7 H 8883—Gray with black and white...\$5.80

5 **Long Sleeve Classic Cardigan.** 100% virgin Hi-bulk Orlon acrylic. Hand washable. *State size 34, 36, 38, 40. Shpg. wt. 14 oz.*  
7 H 8858—Bright red                   7 H 8860—Black  
7 H 8856—Heather gold (dark)  
7 H 8857—Heather teal green (medium)  
7 H 8859—Heather blue (medium).....\$4.80

6 **V-neck Pullover.** 100% virgin worsted wool. Window pane plaid with solid rib knit trim. Hand wash. *State size 34, 36, 38, 40.*  
7 H 8866—Bark brown and white  
7 H 8868—Cranberry red and white  
7 H 8867—Black and white. Shpg. wt. 14 oz.\$5.97



**Mock Monogram Jewelry.** *State silver or gold color. Prices include 10% Federal Excise Tax.*  
4 H 4473E—Pendant with large link 21-in. chain and 2 7/8 in. disc.  
4 H 4475E—Earrings, clip back. 1 1/8 in.  
4 H 4474E—Bracelet with 7-in. chain and 1 1/4 in. double disc. Shpg. wt. 2 oz.....Each \$1.00



**Cowl Neck Pullover** . . detachable rib-knit black turtleneck insert. 100% virgin Hi-bulk Orlon acrylic. Hand wash. For gloves see page 26. *State size 34, 36, 38, 40. Shpg. wt. 1 lb. 3 oz.*  
7 H 8862—Bright and medium blue  
7 H 8863—Med. and dark gold...\$7.97



# Full-fashioned CLASSICS

## 1 Long-sleeved Pullover

Versatile sweater that leads a busy life. Rib-knit cuffs and bottom band. Choice of 3 fibers. Sizes 34, 36, 38, 40. State size. Shpg. wt. 14 oz.

**Luxurious Part Fur Fiber . . . 70% lamb's wool, 20% Angora rabbit's hair, 10% nylon. Hand wash.**  
 7 H 8822—Mocha beige      7 H 8826—Gray (med.)  
 7 H 8823—Black              7 H 8825—White  
 7 H 8827—Stone green (medium) . . . . . \$5.97

**Ban-Lon®. Textralized® Yarn. Machine washable 100% nylon; dries quickly; won't pill or fuzz.**  
 7 H 9606—Mocha beige      7 H 9603—White  
 7 H 9620—Golden glow      7 H 9602—Black  
 7 H 9619—Berry red . . . . . \$4.80

**100% Virgin Hi-bulk Turbo Orlon® Acrylic . . . hand wash; dries quickly; never needs blocking.**  
 7 H 8341—Mocha beige  
 7 H 8336—Heather gray (medium)  
 7 H 8342—Shadow blue (medium)  
 7 H 8346—Black  
 7 H 8347—White . . . . . \$4.50

## 2 Short-sleeved Pullover

Handsome style to wear with skirts, slacks or suits. Rib-knit cuffs, band. Choice of 3 fibers. Sizes 34, 36, 38, 40. State size. Pin not included.

**Soft, Part Fur Fiber . . . 70% lamb's wool, 20% Angora rabbit's hair and 10% nylon. Hand wash.**  
 7 H 8814—Golden glow      7 H 8815—White  
 7 H 8817—Stone green (medium)  
 7 H 8818—Shadow blue (medium)  
 7 H 8816—Heather gray (med.). Wt. 13 oz. \$4.97

**Ban-Lon, Textralized Yarn. Machine washable 100% nylon; quick drying; won't pill or fuzz.**  
 7 H 9346—Golden glow      7 H 9356—Berry red  
 7 H 9373—White              7 H 9374—Black  
 7 H 9344—Stone green (med.). Wt. 12 oz. \$3.80

**100% Virgin Hi-bulk Turbo Orlon Acrylic . . . hand wash; dries quickly; never needs blocking.**  
 7 H 8373—Golden glow      7 H 8302—White  
 7 H 8371—Heather gray (medium)  
 7 H 8372—Stone green (medium)  
 7 H 8378—Mocha beige (med.). Wt. 12 oz. \$3.80

## 3 Fitted Cardigan

Smart casual in choice of 3 easy-to-care-for fibers. Long sleeves; color-matched buttons. Sizes 34, 36, 38, 40. Please state correct size.

**Warm, Part Fur Fiber . . . 70% lamb's wool, 20% Angora rabbit's hair, 10% nylon. Hand wash.**  
 7 H 8829—Stone green      7 H 8831—Black  
 7 H 8830—Heather gray (medium)  
 7 H 8833—Chestnut brown (medium)  
 7 H 8832—Shadow blue (med.). Wt. 15 oz. \$6.97

**Ban-Lon. Textralized Yarn. Machine washable 100% nylon; dries quickly; won't pill or fuzz.**  
 7 H 9357—Stone green      7 H 9366—Black  
 7 H 9358—Wood violet (light)  
 7 H 9359—Chestnut brown (medium)  
 7 H 9375—White. Shpg. wt. 14 oz. . . . . \$5.80

**100% Virgin Hi-bulk Turbo Orlon Acrylic . . . hand wash; quick drying; never needs blocking.**  
 7 H 8387—Stone green  
 7 H 8325—Black  
 7 H 8383—Heather gray (medium)  
 7 H 8320—Chestnut brown (medium)  
 7 H 8388—Wood violet (lt.). Wt. 14 oz. . . . \$4.80



## SWEATER-SHIRTS

**¾-length Push-up Sleeves. Pullover of 100% virgin Hi-bulk Turbo Orlon acrylic. Full fashioned. White trim. Hand wash. State size 32, 34, 36, 38, 40. Shpg. wt. 13 oz.**  
 7 H 8717—Heather gray (medium)  
 7 H 8718—Shadow blue (medium)  
 7 H 8719—Golden glow  
 7 H 8720—Mocha beige (medium) . . . \$5.80

**Long Sleeves . . . Turn-back Cuffs. Ban-Lon pullover of Textralized yarn . . . machine washable 100% nylon. Full fashioned. Wt. 13 oz. Sizes 34, 36, 38, 40. State correct size.**  
 7 H 8721—White  
 7 H 8722—Black  
 7 H 8723—Stone green (medium)  
 7 H 8724—Flame red . . . . . \$6.97

MEASUREMENT CHART for SWEATERS	Size is . . . . .	32	34	36	38	40
Order only sizes listed with each catalog number	if bust is (inches) . .	29-30	31-32	33-34	35-36	37-38

1

2

3



Jewelry . . . of snake chain.  
 State gold or silver color.  
**Necklace, Earrings.** 5-  
 row necklace adj. to 16½  
 in. 1½-in. drop earrings,  
 screw back. Wt. 4 oz.  
 4 H 4512ME—Set. **\$3.98**  
**4-row Bracelet.** 7¼ in.  
 4 H 4513ME— Shpg. wt.  
 3 oz. . . . . **\$2.00**  
 Prices include 10%  
 Federal Excise Tax



# BIG

**1** **Sweater Jacket.** Face framing collar has stays to keep it shapely. Bracelet-length sleeves. Two patch pockets. 100% Hi-bulk Turbo Orlon® acrylic. Hand wash. *State size* 34, 36, 38, 40. Wt. 1 lb. 4 oz.  
7 H 8906—White  
7 H 8907—Beige.....\$6.80

**2** **Boxy Pullover** in fancy rib stitch. Boat-neckline. Moth-off® moth-proofed. 100% virgin worsted wool. Hand washable. *State size* 34, 36, 38, 40. Wt. 1 lb. 5 oz.  
7 H 8885—White    7 H 8886—Black  
7 H 8887—Cranberry red  
7 H 8888—Stone green (medium)...\$6.80

**3** **Cable Knit Cardigan.** 100% virgin wool. Hand wash. Shpg. wt. 1 lb. 2 oz. *State size* 34, 36, 38, 40.  
7 H 8900—White  
7 H 8901—Old gold (bright)  
7 H 8902—Stone green (med.)  
7 H 8903—Wood violet (dk.)  
7 H 8904—Mocha (light) beige.....\$7.80

**4** **Shawl Collar Pullover.** 100% Hi-bulk Turbo Orlon acrylic. Hand washable. Shipping wt. 1 lb. 3 oz. *State size* 34, 36, 38, 40.  
7 H 8895—White  
7 H 8896—Black  
7 H 8897—Old gold (bright)  
7 H 8898—Stone (medium) green.....\$5.80

**5** **Jumbo Stitch Cardigan.** 100% virgin Hi-bulk Turbo Orlon acrylic. Hand washable. *State size* 34, 36, 38, 40.  
7 H 9817—White  
7 H 9814—Black  
7 H 9819—Old gold (bright)  
7 H 9820—Med. stone green  
7 H 9821—Lt. mocha beige. Wt. 1 lb....\$6.80  
*State larger size* 42, 44, 46.  
7 H 9823—White  
7 H 9822—Black  
7 H 9824—Lt. mocha beige. Wt. 1 lb. 3 oz.\$7.80

Order only sizes listed with each catalog number

MEASUREMENT CHART for SWEATERS								
Size is....	32	34	36	38	40	42	44	46
If bust is...	29-30	31-32	33-34	35-36	37-38	39-40	41-42	43-44



1

5



2



3

# KNITS

**1** Tunic Twosome, a terrific sportswear fashion. Boldly striped, bulky tunic has an intriguing tie belt, side slits. Companionable long sleeve black pullover boasts a mock turtleneck. Both sweaters are 100% virgin worsted wool. Hand washable. State size 32, 34, 36, 38, 40.  
 7 H 8913—Tunic only. Wt. 1 lb. 1 oz. \$7.97  
 7 H 8914—Pullover only. Wt. 12 oz... 2.97

**2** Surprise Pullover converts its hood to a super-size collar in an instant. Button loop at neck. 100% virgin worsted wool. Hand washable. Shipping wt. 1 lb. 2 oz. Sizes 32, 34, 36, 38, 40. State size.  
 7 H 8917—Ruby red  
 7 H 8915—White  
 7 H 8916—Black  
 7 H 8918—Old gold (bright).....\$6.97

**3** Pullover . . fisherman's knit with handsome traditional designs. An unusually attractive style. Flattering cowl collar and long sleeves. 100% virgin worsted wool. Hand washable. Sizes 34, 36, 38, 40. Please state correct size. Shipping weight 1 lb. 4 oz.  
 7 H 8909—Natural white.....\$8.97

**4** Cardigan, attractively striped front and back. Shawl collar, long sleeves. 100% virgin worsted wool. Hand washable. Sizes 34, 36, 38, 40. Please state correct size. Shipping weight 1 lb. 6 oz.  
 7 H 8911—Red with white and black  
 7 H 8912—Black with white and gold.....\$8.80

**5** Shaggy Pixie Hat feels like soft fur, takes any shape that suits your whim. Print cotton lining. Fits 21¼ to 22½ inch head sizes. Shipping weight 1 lb. 1 oz. Colors: all black, white or medium green; also beige tones. Please be sure to state color wanted.  
 N78 H 2620..... \$5.97



4

Not even a down payment on Sears Charge Plan . . see page 729



### Luxurious, soft knits

**Shawl Collar Cardigan** with  $\frac{3}{4}$ -length sleeves. Luscious-looking blend of 60% lamb's wool, 20% fur fiber and 20% nylon. Hand wash. *Sizes 34, 36, 38, 40. State size.*

- 7 H 8737—Gray heather (medium)
- 7 H 8738—Beige heather (light)
- 7 H 8739—Moss green (medium)
- 7 H 8740—Golden glow (med.)
- Shipping weight 12 oz. . . . . \$4.97

**V-neck Pullover** with club collar shows off a pretty jacquard design in charcoal gray. Blend of 60% lamb's wool, 20% rabbit hair and 20% nylon. Hand wash. Shpg. wt. 11 oz. *Sizes 34, 36, 38, 40. State size.*

- 7 H 8733—Gray heather (medium)
- 7 H 8735—Moss green (medium)
- 7 H 8734—Flame red
- 7 H 8736—Bright blue. . . . . \$3.97

### Delightful plushy textures

**Novelty-neckline Pullover.** Button trim on dickey-like insert.  $\frac{3}{4}$ -length sleeves. Napped and sheared 100% virgin Hi-bulk Turbo Orlon® acrylic. Hand wash. Shpg. wt. 13 oz. *Sizes 34, 36, 38, 40. State size.*

- 7 H 8085—Flame red
- 7 H 8086—Golden glow (medium)
- 7 H 8087—Moss green (med.)
- 7 H 8088—Bright blue. . . . . \$4.80

**Club-collared Cardigan** has a surface that's as nice to touch as a cuddly puppy. It's napped and sheared 100% virgin Hi-bulk Turbo Orlon acrylic. Unusual button closing.  $\frac{3}{4}$  sleeves. Hand wash. Shpg. wt. 14 oz. *Sizes 34, 36, 38, 40. State size.*

- 7 H 8081—White      7 H 8082—Black
- 7 H 8083—Shadow blue (lt.)
- 7 H 8084—Stone green (med.) . \$5.80

**1 Glitter-trimmed Cardigan.** Full fashioned long sleeves. 100% virgin Hi-bulk Turbo Orlon acrylic. Hand wash.

- Sizes 34, 36, 38, 40. State size.*
- 7 H 8742—White      7 H 8743—Black
  - 7 H 8744—Light blue
  - 7 H 8745—Lt. pink. Shpg. wt. 15 oz. . . \$7.80
  - Larger sizes 42, 44, 46. State size.*
  - 7 H 8746—White      7 H 8747—Black
  - 7 H 8748—Light blue
  - 7 H 8749—Lt. pink. Shpg. wt. 1 lb. . . \$8.80

**2 Mock Turtleneck Pullover** with  $\frac{3}{4}$ -length sleeves. 100% virgin Hi-bulk Turbo Orlon acrylic. Hand wash. Wt. 12 oz. *Sizes 34, 36, 38, 40. State size.*

- 7 H 9262—White      7 H 9263—Black
- 7 H 9264—Ruby red
- 7 H 9268—Copper glow (med.) . . . . \$2.97

**MEASUREMENT CHART for SWEATERS**

Order only sizes listed with each catalog number

Size. . . .	34	36	38	40	42	44	46
Bust. . . .	31-32	33-34	35-36	37-38	39-40	41-42	43-44





1



2



3

1 Short-sleeve Pullover with a bulky, novelty knit shawl collar edged in white. Ban-lon®. Textralized® yarn. 100% nylon . . machine wash. State size 34, 36, 38, 40. 7H8725—Black 7H8726—Wood violet (light) 7H8727—Moss green (medium) 7H8728—Flame red Shpg. wt. 11 oz. . . . . \$3.80

2 Cowl-collared Pullover. Removable side bow can be replaced by your scarves. ¾-length sleeves. 100% virgin Turbo Orlon® acrylic. Hand wash. Shpg. wt. 12 oz. State size 34, 36, 38, 40. 7H8729—Coral pink (medium) 7H8731—Golden glow (medium) 7H8730—Bright blue 7H8732—Black . . . . . \$3.80

3 Pert Pullover. 100% virgin Hi-bulk Orlon acrylic. White collar of 50% Angora rabbit hair, 50% nylon. Short sleeves. Hand wash. State size 34, 36, 38, 40. 7H8846—Heather gray (med.) 7H8849—Stone green (med.) 7H8848—Mocha beige (light) 7H8847—Flame red Shipping wt. 12 oz. . . . . \$2.83

"Charge It" if you wish . . . see page 729

4 Novelty Bulky Cardigan . . so inexpensive. 100% virgin Hi-bulk Turbo Orlon acrylic. Hand wash. Sizes 34, 36, 38, 40. Please state size. 7 H 8944—White. Shipping weight 1 pound. . \$3.97

5 V-neck Classic. Mock fashioned long sleeves. 100% virgin Hi-bulk Turbo Orlon acrylic. Hand wash. Shpg. wt. 13 oz. State size 34, 36, 38, 40. 7 H 9102—White 7 H 9103—Black 7 H 9104—Sapphire blue (medium) 7 H 9106—Ruby red 7 H 9105—Chestnut (medium) brown. . \$3.80

6 Award Sweater Coat in Orlon or wool. State size 34, 36, 38, 40, 42. Virgin Orlon acrylic. Hand wash. 7 H 9310—White 7 H 9313—Bright red 7 H 9311—Navy 7 H 9314—Gold Shipping weight 1 lb. 5 oz. . . \$6.80 Virgin Worsted Wool. Hand wash. 7 H 9318—Bright red 7 H 9319—White 7 H 9320—Navy 7 H 9321—Gold Shipping weight 1 lb. 2 oz. . . \$6.80 6-inch Initial. Cotton felt. Apply with hot iron. State initial "A" to "Z". 7 H 9316—Gold. Shpg. wt. 1 oz. . 25c

7 2-way Cardigan . . club collar can be tucked in. Novelty-stitch border. ¾-length sleeves. 100% virgin Turbo Orlon acrylic. Hand wash. Shpg. wt. 13 oz. State size 34, 36, 38, 40. 7H8835—Med. golden glow 7H8836—Lt. wood violet 7H8837—Black 7H8838—Chestnut (medium) brown. . \$3.80



4



5



6



7



# Budget Classics

Virgin Hi-bulk Turbo Orlon®. Mock fashioned. Hand wash.  
 Virgin Moth-Off wool. Hand wash.  
 Machine washable Ban-Lon®. Textralized® yarn. 100% nylon. Mock fashioned.

**1 Long-sleeve Fitted Cardigan**  
*State size 34, 36, 38, 40.*

Virgin Hi-bulk Turbo Orlon Acrylic. Shipping weight 15 ounces.  
 7 H 9229—Chestnut brown  
 7 H 9231—Wood violet (medium)  
 7 H 9236—Stone green (medium)  
 7 H 9234—Golden glow  
 7 H 9227—Black.....\$3.84

Virgin Zephyr Wool. Wt. 12 oz.  
 7 H 9565—Chestnut brown  
 7 H 9568—Sapphire blue (medium)  
 7 H 9567—Ruby red  
 7 H 9569—Black.....\$3.66

Ban-Lon. Textralized Yarn. 100% nylon. Shipping weight 15 oz.  
 7 H 9962—Chestnut brown  
 7 H 9958—Cornflower blue (med.)  
 7 H 9959—White  
 7 H 9960—Black  
 7 H 9961—Ruby red.....\$4.84

Ban-Lon in Larger sizes 42, 44, 46.  
 7 H 9985—Chestnut brown  
 7 H 9984—Black  
 7 H 9983—Cornflower blue (med.). Wt. 15 oz. *State size.* \$5.84

**2 Short-sleeve Fitted Pullover**  
*State size 34, 36, 38, 40.*

Virgin Hi-bulk Turbo Orlon Acrylic. Shipping weight 10 ounces.  
 7 H 9216—Wood violet (medium)  
 7 H 9210—White  
 7 H 9214—Stone green (medium)  
 7 H 9211—Black  
 7 H 9213—Golden glow... \$2.84

Virgin Zephyr Wool. Wt. 10 oz.  
 7 H 9549—Autumn gold  
 7 H 9551—Sapphire blue (med.)  
 7 H 9552—Champagne beige (lt.)  
 7 H 9550—Ruby red  
 7 H 9553—Black.....\$2.66

Ban-Lon. Textralized Yarn. 100% nylon. Shipping weight 10 oz.  
 7 H 9946—Wood violet (medium)  
 7 H 9945—Mocha beige (light)  
 7 H 9951—White  
 7 H 9953—Black  
 7 H 9954—Ruby red.....\$2.84

**3 Long-sleeve Boxy Cardigan**  
*State size 34, 36, 38, 40.*

Virgin Hi-bulk Orlon Acrylic. Shipping weight 15 ounces.  
 7 H 9064—Cornflower blue  
 7 H 9065—White  
 7 H 9068—Champagne beige (lt.)  
 7 H 9072—Black  
 7 H 9073—Ruby red.....\$3.84

*State Larger size 42, 44, 46.*  
 7 H 9078—Cornflower blue  
 7 H 9084—Champagne beige (lt.)  
 7 H 9087—Chestnut brown (med.)  
 7 H 9080—White  
 7 H 9089—Black. Wt. 15 oz. \$4.84

Virgin Zephyr Wool. Wt. 13 oz. *State size 34, 36, 38, 40 only.*  
 7 H 9576—Champagne beige (lt.)  
 7 H 9578—Ruby red  
 7 H 9580—Black.....\$3.66

**4 Long-sleeve Fitted Pullover**  
*State size 34, 36, 38, 40.*

Virgin Hi-bulk Turbo Orlon. Shipping weight 12 ounces.  
 7 H 9239—Heather gray  
 7 H 9247—Cornflower blue (med.)  
 7 H 9248—Stone green (medium)  
 7 H 9250—Golden glow  
 7 H 9242—Ruby red.....\$3.39

Virgin Zephyr Wool. Wt. 11 oz.  
 7 H 9558—Ruby red  
 7 H 9559—Sapphire blue (med.)  
 7 H 9561—Black  
 7 H 9563—Autumn gold (lt.). \$3.29



## Shetland Favorites

**Boxy Cardigan** with long sleeves has a versatile life. Looks fashionable over your favorite sport skirts, and tops all sorts of pants in style. Button it neatly or open it for a jacket effect. Wear it on your daily round of activities or when relaxing at home. Take it with you on country weekends. 100% imported Shetland wool. Hand wash. No pin. Shpg. wt. 14 oz. *Sizes 34, 36, 38, 40. Please state size.*  
 7 H 8518—Green heather (dark)  
 7 H 8520—Charcoal heather (dark gray)  
 7 H 8521—Oxford heather (medium gray)  
 7 H 8522—Beige heather  
 7 H 8531—Black..... \$4.80

**Crew Neck Pullover** with long sleeves . . . a classic in 100% imported Shetland wool. Comes in basic shades that stay in fashion, are easy to coordinate with skirts and pants. Wear it in the traditional easy-fitting way or tuck it in for a completely new look. Accessorize it many different ways. It always looks great. Hand washable. Shipping weight 14 oz. *Sizes 34, 36, 38, 40. Please state size.*  
 7 H 8524—Charcoal heather (dark gray)  
 7 H 8525—Oxford heather (medium gray)  
 7 H 8526—Beige heather  
 7 H 8527—Black  
 7 H 8532—Green heather (dark).. \$3.80



**Heraldic Key Pendant.** Smart with sweaters, blouses, casual dresses. Antique finish key, on a bright finish 24-in. large link chain. Gold color with ruby color stones and trim or silver color with sapphire color stones and blue trim. *State choice.* 10% Federal Excise Tax included. Shpg. wt. 2 oz. 4 H 4520E... \$1.00

Order only sizes listed with each catalog number

MEASUREMENT CHART FOR SWEATERS							
Size is.....	34	36	38	40	42	44	46
If bust is (inches).....	31-32	33-34	35-36	37-38	39-40	41-42	43-44

If your measurements fall between 2 sizes, order the larger size

Just say "Charge it" if you wish . . . see page 729



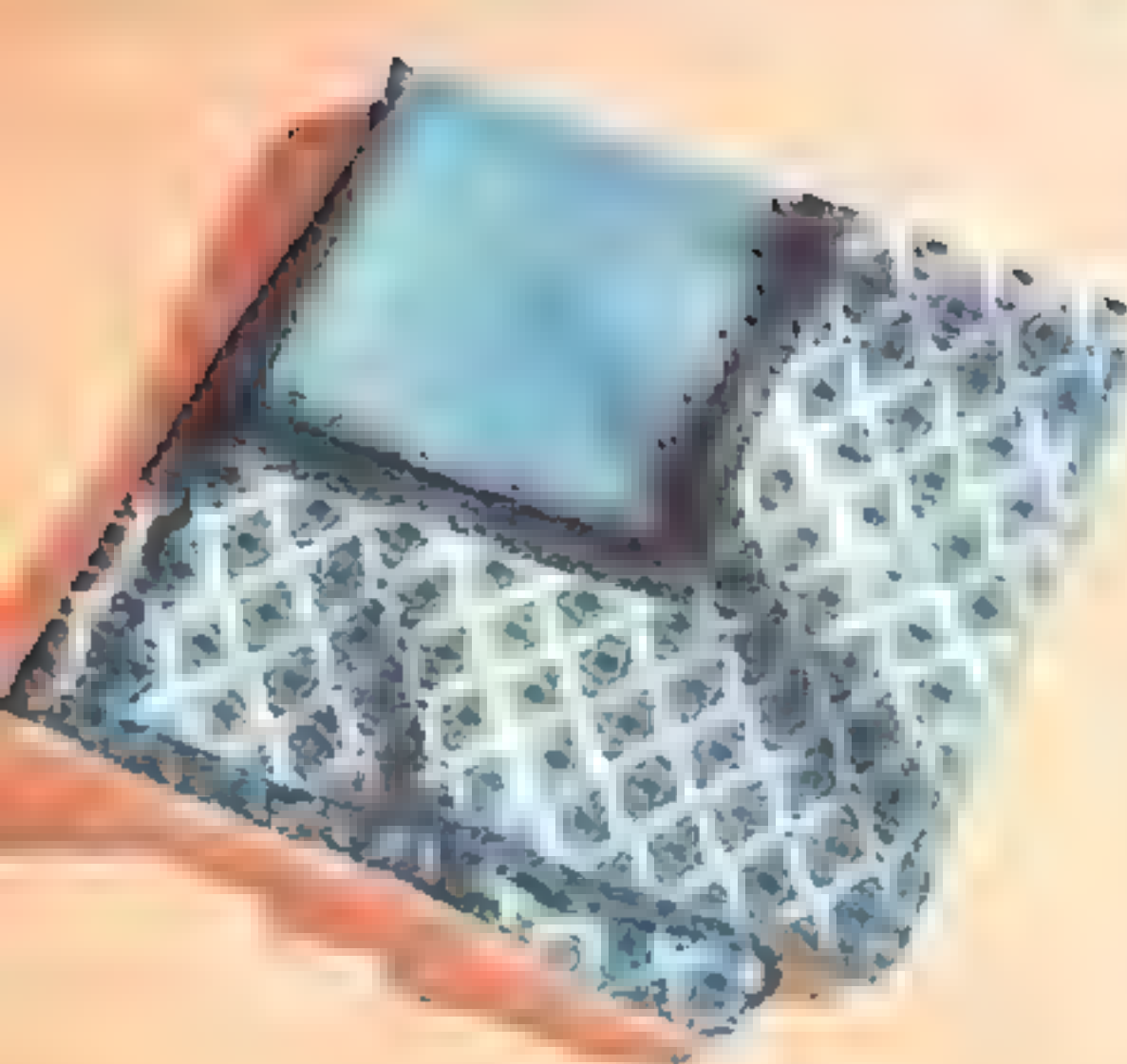


**1** Versatile Cardigan. Novelty knit collar;  $\frac{3}{4}$  sleeves. Ban-lon®. Textralized® yarn. 100% nylon. Full fashioned. Machine washable. *State size* 34, 36, 38, 40. Shipping weight 13 ounces. 7 H 8701—Shadow blue 7 H 8702—Black 7 H 8703—White 7 H 8704—Stone green (medium).....\$6.97

**2** V-neck Pullover with long sleeves. A spirited classic. Full fashioned blend of 70% lamb's wool, 20% Angora rabbit hair, 10% nylon. Hand washable. *State size* 34, 36, 38, 40. Shipping weight 14 ounces. 7 H 8689—Wood violet 7 H 8690—Black 7 H 8691—Light mocha beige 7 H 8692—Berry red.....\$7.80

**3** Novelty-collared Pullover . . . a smart, new looking sweater style.  $\frac{3}{4}$  sleeves. Full fashioned. 100% virgin Hi-bulk Turbo Orlon® acrylic. Hand wash. *State size* 32, 34, 36, 38, 40. Shipping weight 14 oz. 7 H 8694—Stone green 7 H 8697—Flame red 7 H 8695—Golden glow (medium) 7 H 8696—Shadow blue (medium).....\$5.80

**4** Wing-collared Cardigan. Decorative knit accents.  $\frac{3}{4}$ -length sleeves. Full fashioned. 70% lamb's wool, 20% Angora rabbit hair, 10% nylon. Hand wash. *State size* 34, 36, 38, 40. Shpg. wt. 14 oz. 7 H 8685—Golden glow 7 H 8686—Black 7 H 8687—Wood violet (medium) 7 H 8688—Mocha brown (medium).....\$9.97



**Silk Foulard Square.** Geometric border print on solid color. About 23x23 in. Hand rolled. Hand wash separately. From Japan. 88 H 8233—Blue 88 H 8234—Fuchsia rose 88 H 8235—Amber tan Shipping weight 2 oz. ....\$1.97

**5 Mock Dickey Pullover.** Full fashioned.  $\frac{3}{4}$  raglan sleeves. 100% Hi-bulk Turbo Orlon® acrylic. Hand wash. Pin not included. State size 34, 36, 38, 40. Shpg. wt. 14 oz.  
 7 H 8705—Shadow blue (medium)  
 7 H 8706—Heather gray (medium)  
 7 H 8707—Stone green (medium)  
 7 H 8708—Golden glow (medium)...\$6.80

5

**6 Portrait-neck Pullover.** Cowl collar with looped tie,  $\frac{3}{4}$ -length sleeves. Full fashioned. 70% lamb's wool, 20% Angora rabbit hair, 10% nylon. Hand washable. State size 34, 36, 38, 40. Shpg. wt. 14 oz.  
 7 H 8713—Med. azure blue 7 H 8714—Black  
 7 H 8715—Light pink  
 7 H 8716—White.....\$9.97

6

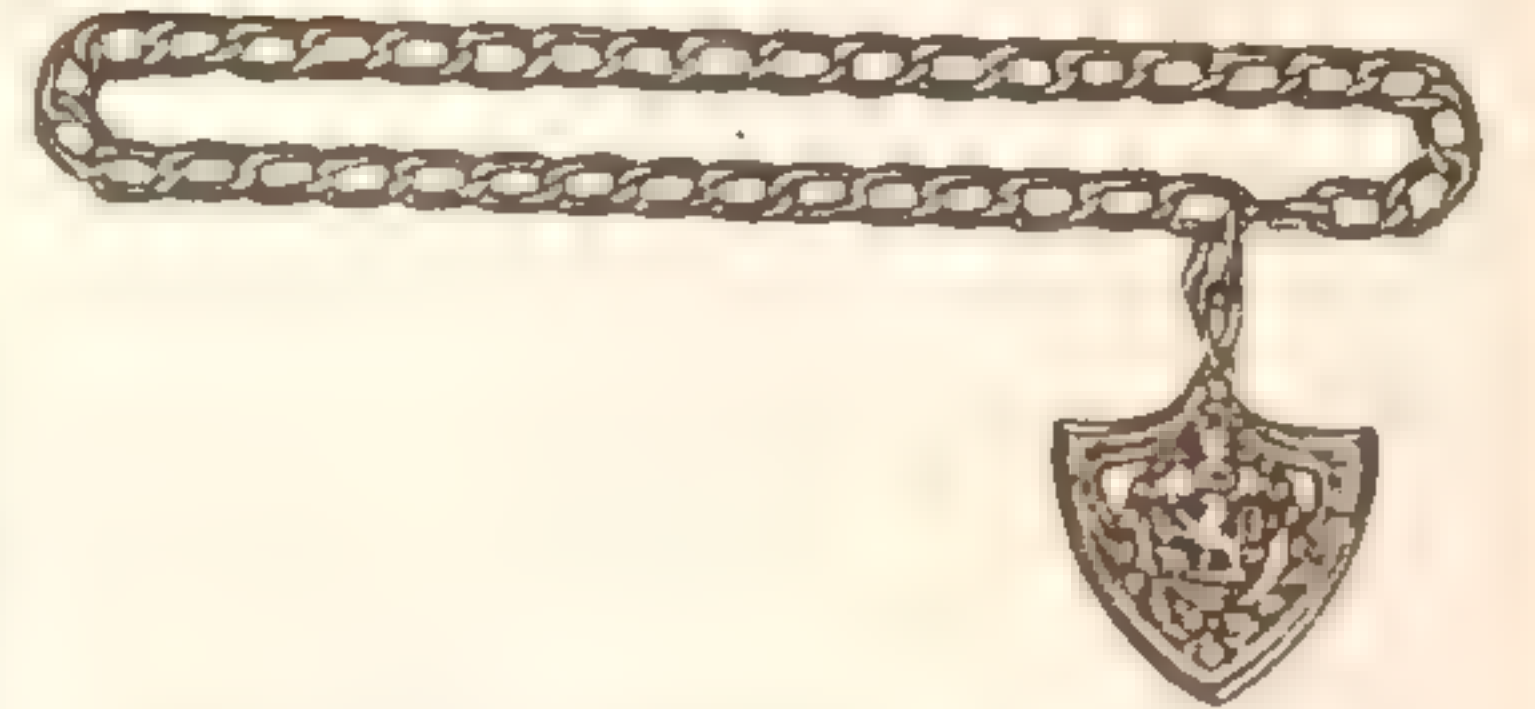
**7 Button-trimmed Pullover.** Luxurious 3-ply blend of 70% lamb's wool, 20% Angora rabbit hair and 10% nylon. Full fashioned. Hand washable. State size 34, 36, 38, 40. Shpg. wt. 15 oz.  
 7H8709—Mocha beige 7H8712—Flame red  
 7H8710—Wood violet (light)  
 7H8711—Azure blue (medium).....\$11.97

**MEASUREMENT CHART for SWEATERS**

Order only sizes listed with each catalog number  
 Size is..... 32 | 34 | 36 | 38 | 40  
 If bust is..... 29-30 | 31-32 | 33-34 | 35-36 | 37-38 in.



7



**Metal Link Chain Belt, medallion fob.** Adjusts to fit 24 to 30 in. waists. Shpg. wt. 6 oz.  
 88 H 8186—Gold color  
 88 H 8187—Silver color.....\$1.97



**Handsome Cardigan** is distinguished by mock cable stitching in front for an expensive look. 100% Orlon® acrylic. Hand washable. *State size* 36, 38, 40, 42, 44, 46. Shpg. wt. 14 oz.  
 7H9766—Beige  
 7H9771—Sapphire blue (med.)  
 7H9775—Black  
 7H9774—Cranberry red..... **\$3.80**

**Part Fur Fiber Blend.** Cardigan of 60% lamb's wool, 20% nylon, 20% fur fiber. Collar can be tucked out of sight. Hand washable. *State size* 36, 38, 40, 42, 44, 46. Shpg. wt. 12 oz.  
 7H8920—Cornflower blue  
 7H8921—Heather gray (med.)  
 7H8923—Deep red  
 7H8922—Stone (medium) green..... **\$4.80**

## Sweaters in Larger Sizes

**Bulky.** Virgin worsted wool. Hand wash. Wt. 1 lb. 1 oz. *State size* 34, 36, 38, 40.  
 7H 8890—White  
 7H 8891—Black  
 7H 8892—Deep old gold  
 7H 8893—Deep wood violet..... **\$6.80**  
*State larger size* 42, 44, 46.  
 7H 8927—Deep old gold  
 7H 8926—Black  
 7H 8925—White.... **\$7.80**

**Sweater Set:** long sleeve fitted cardigan and short sleeve fitted pullover. Mock fashioned. Ban-lon®. Texturalized® yarn . . . 100% nylon; machine wash. Wt. 1 lb. *State size* 42, 44, 46, 48, 50.  
 7H8930—Cranberry red  
 7H8931—Black  
 7H8933—Shadow blue (med.)  
 7H8932—Stone (medium) green..... **\$8.97**

Order only sizes listed with each catalog number

MEASUREMENT CHART for SWEATERS	Size is.....	34	36	38	40	42	44	46	48	50
	if bust is...	31-32	33-34	35-36	37-38	39-40	41-42	43-44	45-46	47-48 in.



**1 Tuxedo Style.** Self-color or floral embroidery. Two pockets. 100% virgin worsted wool. Hand wash. *State size* 36, 38, 40, 42, 44, 46. Shpg. wt. 1 lb. 4 oz.  
 7H 9162—White  
 7H 9161—Med. blue  
 7H 9179—Black.... **\$8.80**

**2 Collared Cardigan** boasts basketweave knit front detailing. Full fashioned. Raglan style long sleeves. Banlon. Texturalized yarn . . . 100% nylon; machine wash. *State size* 36, 38, 40, 42, 44, 46. Shpg. wt. 1 lb.  
 7H 8936—Gold  
 7H 8935—Black  
 7H 8938—Cranberry red  
 7H 8937—Stone (medium) green... **\$6.80**

**3 Sweater Jacket** with wing collar, a trio of patch pockets. Detachable decorative crest. Basketweave knit design. 100% Orlon acrylic. Hand wash. *State size* 36, 38, 40, 42, 44, 46. Shpg. wt. 1 lb. 3 oz.  
 7H 8940—Navy  
 7H 8941—White  
 7H 8942—Beige... **\$6.80**

# Proportioned pants



**SHORT** . . for figures 5 ft. 2 in. and under  
**REGULAR** . . for figures 5 ft. 3 in. to 5 ft. 6 in.  
**TALL** . . for figures 5 ft. 7 in. and over

Scaled to your height from waist to hips, from hips to trouser hem for best fit

Trim pants with these quality features: meticulous tailoring; fine fabrics; interlined waistbands; all seams serged and pressed open for an extra-smooth, neat appearance.

For shirt see page 15



## Capri Pants

Superb Flannel of 100% Wool

**\$6.77** Misses'

Beautiful moth-proof fabric combines with outstanding workmanship in these smart pants. Now specially proportioned to flatter and fit you as no other pair of Capris you ever had. Sleekly styled with tapered legs slit at the sides, a pair of smart button-hole-style pockets. Side zipper. Dry clean. Shipping weight 1 pound.

### SHORT

Misses' sizes 8, 10, 12, 14, 16, 18. State correct size.

V7 H 900—Black  
 V7 H 901—Med. shadow blue  
 V7 H 902—Olive green..\$6.77

### REGULAR

Misses' sizes 8, 10, 12, 14, 16, 18. State correct size.

V7 H 904—Black  
 V7 H 905—Med. shadow blue  
 V7 H 906—Olive green..\$6.77

### TALL

Misses' sizes 10, 12, 14, 16, 18. State correct size.

V7 H 908—Black  
 V7 H 909—Med. shadow blue  
 V7 H 910—Olive green..\$6.77

## Tailored Slacks in 3 fine fabrics

Our Finest Washable Corduroy

**\$4.77** Misses'

Velvety-textured cotton. Self fabric belt, a pair of side pockets with zipper closing concealed by one of them. Shpg. wt. 1 lb.

### SHORT

Misses' sizes 8, 10, 12, 14, 16, 18. State correct size.

V7 H 1042—Dark green  
 V7 H 1043—Dark gray  
 V7 H 1044—Black.....\$4.77

### REGULAR

Misses' sizes 10, 12, 14, 16, 18, 20. State correct size.

V7 H 1046—Dark green  
 V7 H 1047—Dark gray  
 V7 H 1048—Black.....\$4.77

### TALL

Misses' sizes 12, 14, 16, 18, 20. State correct size.

V7 H 1056—Dark green  
 V7 H 1057—Dark gray  
 V7 H 1058—Black.....\$4.77

### WOMEN'S SIZES

Regular length only. Women's sizes 38, 40, 42, 44. State size. Shpg. wt. 2 lbs.

V7 H 1052—Dark gray  
 V7 H 1053—Black  
 V7 H 1055—Dark green \$5.47

Washable, Easy-care Bondyne Gabardine

**\$4.77** Misses'

91% rayon, 9% Dynel® modacrylic. Scientifically blended for better wrinkle recovery. Built-in "press" assures neater wear. Self belt, 2 side pockets, hidden side zipper. Shpg. wt. 1 lb.

### SHORT

Misses' sizes 10, 12, 14, 16, 18, 20. State correct size.

7 H 1150—Black  
 7 H 1151—Dark brown  
 7 H 1152—Navy blue..\$4.77

### REGULAR

Misses' sizes 10, 12, 14, 16, 18, 20. State correct size.

7 H 1154—Black  
 7 H 1155—Dark brown  
 7 H 1156—Navy blue..\$4.77

### TALL

Misses' sizes 12, 14, 16, 18, 20. State correct size.

7 H 1158—Black  
 7 H 1159—Dark brown  
 7 H 1160—Navy blue..\$4.77

WOMEN'S SIZES . . Regular length only. Shpg. wt. 2 lbs. State size 38, 40, 42, 44.

7 H 1162—Black  
 7 H 1163—Dark brown  
 7 H 1164—Navy blue..\$5.47

Soft-nap Flannel Hand Washable

**\$6.77** Misses'

Blend of 85% wool and 15% nylon. Self fabric belt. A pair of handy side pockets with zipper closing concealed in one of them.

### SHORT

Misses' sizes 10, 12, 14, 16, 18, 20. State correct size.

V7 H 1100—Charcoal gray  
 V7 H 1102—Medium gray  
 Shpg. wt. 1 lb.....\$6.77

### REGULAR

Misses' sizes 10, 12, 14, 16, 18, 20. State correct size.

V7 H 1103—Charcoal gray  
 V7 H 1105—Medium gray  
 Shpg. wt. 1 lb.....\$6.77

### TALL

Misses' sizes 12, 14, 16, 18, 20. State correct size.

V7 H 1106—Charcoal gray  
 V7 H 1108—Medium gray  
 Shpg. wt. 1 lb.....\$6.77

WOMEN'S SIZES . . Regular length only.

Women's sizes 38, 40, 42, 44. State correct size.

V7 H 1109—Charcoal gray  
 V7 H 1111—Medium gray  
 Shpg. wt. 2 lbs. .... \$7.74

MEASUREMENT CHART for PANTS  
 . . order only sizes listed with each catalog number

Size is . . . . .	8	10	12	14	16	18	20
If Waist is . . .	23½	24½	25½	27	28½	30½	32½
If Hips are . . .	32½	34	36	38	40	42	44

Misses' sizes				Women's sizes			
38	40	42	44	38	40	42	44
33½	36	38½	41 in.	42	44	46	48 in.

If your measurements fall between 2 sizes, order the larger size



1

**1** Cotton Denim pedal pushers. Concealed side zipper. Waist is adjustable. Washable; Sanforized.\* No belt. Shipping wt. 15 oz.

Misses' sizes 10, 12, 14, 16, 18, 20. *State size.*  
 7 H 550—Navy blue  
 7 H 551—Charcoal gray  
 7 H 553—Faded blue  
 7 H 556—Beige  
 7 H 554—Pine (dark) green... \$2.17

Women's sizes 38, 40, 42, 44. *State size.*  
 7 H 571—Charcoal gray  
 7 H 570—Navy blue  
 7 H 572—Faded blue... \$2.37

\*Maximum fabric shrinkage 1%

2

**2** Rider Jeans . . washable 10-oz. cotton denim; white-backed. Sanforized.\* Riveted front pockets, bar-tacked. Zipper fly-front. No belt. Wt. 1 lb. 5 oz. *State size.*  
 Misses' sizes 8, 10, 12, 14, 16, 18.  
 7 H 712—Navy blue  
 7 H 713—Faded blue  
 7 H 714—Charcoal gray... \$2.47

**3** Cotton Twill Pedal Pushers. Washable. Sanforized.\* No belt. Shpg. wt. 15 oz. *State size.*

Misses' sizes 10, 12, 14, 16, 18, 20.  
 7 H 534—Black 7 H 535—Med. blue  
 7 H 538—Olive green  
 7 H 536—Beige 7 H 537—Red \$2.47  
 Women's sizes 38, 40, 42, 44.  
 7 H 540—Black  
 7 H 541—Medium blue  
 7 H 542—Olive green..... \$2.87

3

4

**4** Cotton Sateen Pedal Pushers. Waist adjusts; side zipper. Washable. *State correct size.*

Misses' sizes 10, 12, 14, 16, 18, 20.  
 7 H 5662—Black  
 7 H 5664—Light blue  
 7 H 5663—Beige. Wt. 12 oz. \$2.67  
 Women's sizes 38, 40, 42, 44.  
 7 H 5665—Black  
 7 H 5666—Beige. Wt. 14 oz. \$2.97

**5** Cotton Sateen Tapered Pants. Waist adjusts. Side zipper. Washable. *State correct size.*

Misses' sizes 10, 12, 14, 16, 18, 20.  
 7 H 5667—Black  
 7 H 5669—Light blue  
 7 H 5668—Beige. Wt. 13 oz. \$2.87  
 Women's sizes 38, 40, 42, 44.  
 7 H 5670—Black  
 7 H 5671—Beige. Wt. 15 oz. \$3.27



## Denim Jeans

**\$2.01** Misses'

Our lowest price

Classic Style in vat-dyed, sturdy 9-ounce cotton fabric. Designed with these outstanding features . . . adjustable waist; bar-tacked at strain points; rivet-reinforced front pockets. 2 back pockets. Concealed side zipper. Smart tapered legs. Contrasting double stitching. Reinforced yoke back. Belt not included. Washable. Sanforized.\*

Misses' sizes 10, 12, 14, 16, 18, 20. *State size.*  
 Shpg. wt. 1 lb. 4 oz.  
 7H700—Navy blue \$2.01  
 Women's sizes 38, 40, 42, 44. *State size.*  
 Shpg. wt. 1 lb. 7 oz.  
 7H707—Navy blue \$2.67

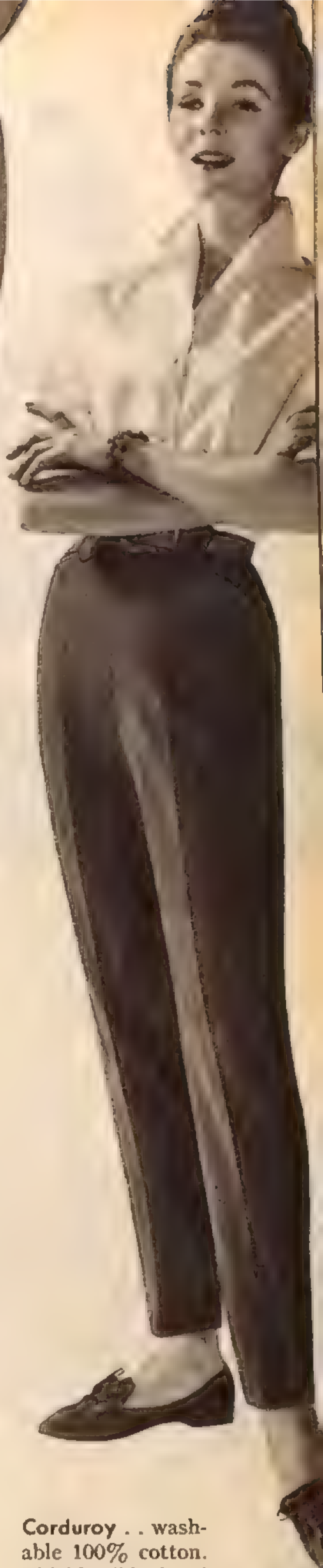
## Cotton Knit Sport Tops

**6** Hooded Pullover . . cotton fleece backing. Muff-pockets. White is washable; wash red separately. Shpg. wt. 12 oz. *State size* small (10); medium (12-14); large (16-18).  
 7 H 1223—White  
 7 H 1224—Red..... \$2.47

**7** Crew Neck Pullover . . cotton fleece backing. Rib-knit neckline, cuffs, band. White is washable; wash red separately. *State size* small (10); medium (12-14); large (16-18).  
 7 H 1252—White  
 7 H 1253—Red. Wt. 12 oz. \$1.57

**8** Cardigan Style with cotton fleece backing. White is washable; wash colors separately. *State size* small (10); medium (12-14); large (16-18).  
 7 H 1255—White  
 7 H 1256—Light blue  
 7 H 1257—Red. Wt. 12 oz. \$1.87





## Ranch Pants

Slim, figure-flattering pants for indoors or outdoors, work or play. All have high-rise waist; wide belt loops; braid-trimmed pockets, back zipper. In a variety of handsome fabrics. Belt is sold separately

**Rib Cord** . . fine, washable cotton. Sturdy, long-wearing, little-or-no-iron sportswear fabric. Max. fabric shrinkage 2%.  
*State Misses' size 8, 10, 12, 14, 16, 18, 20.*  
 Shpg. wt. 1 lb.  
 7 H 740—Black  
 7 H 741—Beige  
 7 H 742—Loden green  
 (medium) . . \$2.84

**Fine Flannel pants** made of 80% wool and 20% Dacron® polyester. Warm, outdoor-weight sportswear fabric. Wrinkle resistant. Easy-to-care for . . hand washable.  
*Misses' sizes 8, 10, 12, 14, 16, 18, 20.*  
*State correct size.*  
 Shpg. wt. 1 lb.  
 7 H 727—Med. gray . . \$4.84

**Denim or Twill.** Washable cotton. Sanforized.\*  
*State Misses' size 8, 10, 12, 14, 16, 18, 20.* Wt. 1 lb. 3 oz.  
 7 H 733—Navy denim  
 7 H 734—Black twill  
 7 H 735—Olive green twill  
 7 H 736—Silver (lt.) gray twill . . . . . \$2.84

**Corduroy** . . washable 100% cotton. Thickly ribbed and velvet-soft.  
*Misses' sizes 8, 10, 12, 14, 16, 18, 20.*  
*Please state size.*  
 Shipping weight 1 pound.  
 7 H 744—Black  
 7 H 745—Olive green  
 7 H 746—Charcoal gray  
 7 H 747—Gold . . . . . \$3.84



**Western Tooled Belt** to wear with ranch pants and jeans. Top-grain cowhide. Nickel-plated buckle. About 1 inch wide. *State waist size 24, 26, 28, 30 inches.*  
 Shipping wt. 5 oz.  
 88 H 8174—Natural tan \$1.57

For shirts shown on these 2 pages, see pages 14 and 15

**MEASURE TO BE SURE** . . see page 764. If measurements fall between 2 sizes, order the larger size. Order only sizes listed with each catalog number.

**Cuffed Short Shorts** . . washable cotton twill. Side zipper; 2 pockets. Sanforized.\* Shipping weight 7 ounces.  
*State Misses' size 10, 12, 14, 16, 18, 20.*  
 7 H 5304—Red  
 7 H 5305—Navy blue  
 7 H 5306—White . . . . . \$1.94

\*Maximum fabric shrinkage 1%

Just say "Charge It" and pay later . . see page 729



### Twill Jeans

\$2.37 Misses'

**Versatile Classic** . . washable, Sanforized\* cotton. Adjustable waist-band. Front pockets are rivet-reinforced. Bar-tacked. Concealed side zipper. No belt.  
*Misses' sizes 10, 12, 14, 16, 18, 20. State size.*  
 Shpg. wt. 1 lb. 4 oz.  
 7 H 701—Black  
 7 H 702—Olive green  
 7 H 706—Medium blue  
 7 H 704—Light silver gray . . . . . \$2.37  
*Women's sizes 38, 40, 42, 44. State size.*  
 Shpg. wt. 1 lb. 7 oz.  
 7 H 708—Black  
 7 H 709—Olive green  
 7 H 710—Med. blue \$2.83

### Lined Jeans

\$3.97 Misses'

**9-oz. Denim or Twill.** Washable, Sanforized\* cotton. Plaid cotton flannel lining. Bar-tacked at strain points. Side zipper. No belt.  
*Misses' sizes 10, 12, 14, 16, 18, 20. State size.*  
 Shpg. wt. 1 lb. 8 oz.  
 7 H 607—Navy denim  
 7 H 608—Black twill  
 7 H 609—Beige twill  
 7 H 610—Medium green twill . . . . . \$3.97  
*Women's sizes 38, 40, 42, 44.* Shpg. wt. 1 lb. 8 oz.  
 7 H 612—Navy denim  
 7 H 613—Black twill  
 7 H 614—Beige twill  
 7 H 615—Med. green twill. *State size* . . . \$4.57

**Plaid Cotton Flannel Shirt.** Washable; fab. shrink. 1%.  
*Misses' sizes 10, 12, 14, 16, 18. State size.*  
 7 H 4170—Red and black. Shpg. wt. 8 oz. . . . \$1.97  
*Women's sizes 38, 40, 42, 44. State size.*  
 7 H 4171—Red and black. Shpg. wt. 8 oz. . . . 2.64

## Stoles know no season



**1** Dressy Rayon Velvet has shawl collar effect that shapes to the neck. Rayon floral embroidery trim. Acetate taffeta lined. About 17x67 in. Crush-resistant. Dry clean. Shpg. wt. 1 lb. 1 oz.  
88 H 8618—Black . . . \$5.97

**2** Soft Tubular Jersey. 80% Orlon® acrylic and 20% virgin wool. About 23x71 in., incl. wool fringe. Dry clean. Shpg. wt. 1 lb. 2 oz.  
88 H 8619—Bark brown  
88 H 8620—White  
88 H 8621—Black . . . \$5.97

**3** 100% Virgin Wool semi-circular style, hand crocheted in beautiful rosette pattern. About 25x65 in. at widest points. Hand wash separately. From Japan. Shpg. wt. 7 oz.  
88 H 8622—White  
88 H 8623—Black . . . \$5.97

**4** 100% Virgin Orlon acrylic knit in a smart overlay box pattern. About 18x72 in. including fringe. Hand wash. Shipping wt. 11 oz.  
88 H 8624—White . . . \$3.97



## Seven quick tricks to vary your wardrobe

**5** Turn-around Collar . . wear as shown or wear point in front. Fine quality cotton pique with Venise-type lace edging. Cotton backing. 3-button closing. About 7 inches long in front, 10 inches at pointed back. Hand washable. Shpg. wt. 3 oz.  
88 H 8352—White . . \$1.97

**6** Head-warmer Scarf keeps you so snug. Double fabric ribbed knit of hi-bulk Turbo Orlon acrylic. Shaped ends. Completely self bound. About 13x65 in. Hand wash. Shpg. wt. 9 oz.  
88 H 8842—White . . . \$3.47

**7** Long Scarf . . silk chiffon richly trimmed with all-over jacquard floral design, woven in white rayon satin. Hand rolled edges. About 19x47 in. Hand wash separately. Imported from Japan. Shipping weight 2 ounces.  
88 H 8406—White  
88 H 8407—Pink . . \$1.97

**8** Head Cover. About 9x43 in. Fits all. Wool Jersey. Shpg. wt. 3 oz.  
88 H 8847—Red 88 H 8846—Black \$1.97  
Same style, in Silk Chiffon. Double fabric. Imported from Japan.  
88 H 8843—Beige 88 H 8844—White  
88 H 8845—Black. Shpg. wt. 2 oz. . . \$1.97

**9** Dickey. Cotton Oxford cloth. About 14 inches long in front, 7 in back. Machine wash; drip dry. *State neck size* small (13½); medium (14) inches.  
88 H 8329—White. Shpg. wt. 3 oz. . \$1.97

**10** Shawl Collar. Rabbit fur. Hook and eye closing. Lined. About 4 in. at widest part. Fits all. From Japan. 10% Fed. exc. tax included. Wt. 4 oz.  
88 H 8354E—White . . \$2.17

**11** Rabbit Fur Collar. Sham pearl trim. Hook and eye closing. Lined. About 2¼ in. wide. Fits all. From Japan. Shipping wt. 3 oz.  
88 H 8353—White . . \$1.97

Just say "Charge It" and pay later . . . see page 729

**1** Rayon Velvet Bolero. Wired collar.  $\frac{3}{4}$ -length dolman sleeves. Rayon taffeta lining. *State bust size* small (30-32); medium (34-36); large (38-40) in. Dry clean. Shpg. wt. 1 lb. 7 oz. 88 H 8901—Black. . . . . \$6.47

**2** Shrug. Orlon® acrylic pile feels like fur. Cotton backed. Lined. Self-covered buttons. *State bust size* small (30-32); medium (34-36); large (38-40) in. 88 H 8902—Loden (medium) green 88 H 8903—Fawn (lt.) brown Dry clean. Wt. 1 lb. 10 oz. \$8.97

**3** Bolero looks like fur. Rayon face, cotton back. Acetate taffeta lining. Shawl collar. Dolman sleeves. Dry clean. Wt. 1 lb. 3 oz. *State bust size* small (30-32); medium (34-36); large (38-40) in. 88 H 8907—Black 88 H 8908—White. . . . . \$7.97



## the Accessory Jacket



### Instant-costume Strategy

**4** Lovely Lace . . acetate and nylon, lined with acetate taffeta. Rhinestone trim, snap closing at neck. Set-in  $\frac{3}{4}$  sleeves. Dry clean. *State bust size* medium (34-36); large (38-40) in. Shpg. wt. 10 oz. 88 H 8904—Black 88 H 8905—White. \$4.97

**5** Checks good everywhere . . 55% wool, 45% rayon. Open front. Set-in  $\frac{3}{4}$  sleeves. Lined. Dry clean. *State bust size* small (30-32); medium (34-36); large (38-40) in. 88H8910—Brown and white 88H8911—Black and white. Wt. 15 oz. . \$5.97

**6** Rayon Velvet . . the Paris influence is evident in its rayon braid trim, open front. Set-in  $\frac{3}{4}$  sleeves. Acetate taffeta lining. Dry clean. *State bust size* medium (34-36); large (38-40) inches. Shpg. wt. 1 lb. 1 oz. 88 H 8900—Black.. \$7.47

**7** 100% Wool . . our versatile cardigan. 4 self-covered buttons. Patch pockets. Set-in  $\frac{3}{4}$  sleeves. Rayon taffeta lining. Dry clean. *State bust* small (30-32); medium (34-36); large (38-40) inches. Shipping weight 1 pound 11 ounces. 88 H 8918—Gold 88 H 8919—Black. . . . . \$9.97





# Important

**1** Zodiac Contour Belt. Leather with 12 gold-color metal symbols. Leather-lined. Front hook closing. About 1 1/4 in. wide. *State waist size* 24, 26, 28, 30 in. Shipping wt. 7 oz.  
 88 H 8105—Red      88 H 8104—Black  
 88 H 8103—Dark brown . . . . . \$4.97

**2** Acetate Taffeta Ascot. Double fabric. About 9x40 in. (at widest points). Hand wash separately. Shipping weight 3 ounces.  
 88 H 8416—Lilac      88 H 8417—White  
 88 H 8418—Turquoise blue . . . . . \$1.67

**3** Turban Hat lavishly draped with wool jersey. Fits 21 1/4 to 22 1/2 inches. *State* black with gray; royal blue with light blue; beige with light brown; or all white.  
 N78 H 2630—Shipping weight 10 oz. . . \$4.97

**4** Caviar seed bead Jewelry . . cascades of tiny beads. 50-row necklace adjusts from 16 1/2 to 19 1/2 inches. 1-inch earrings, clip back. Prices include 10% Federal Excise Tax.  
 4H4535E—Necklace, earrings. Wt. 4 oz. \$5.98  
 4H4536E—30-row Bracelet. 7 1/4 in. Shipping weight 3 ounces . . . . . \$2.00

## The Pleated Dress

Beautiful, uncomplicated lines that let a scarf, belt or jewelry set the mood. Lightly fitted bodice is dressmaker-detailed (strategically placed darts to shape your bosom; gusseted sleeves); the skirt of stay-in pleats moves gracefully with you. Side zipper. Pin sold on opposite page.

*Misses' sizes* 12, 14, 16, 18, 20. *Order correct size.* Shipping weight 1 lb. 1 oz.

*Flannel of Acrilan® acrylic and rayon . .* lightweight and with a fine twill weave. Hand wash separately.  
 N31 H 7200—Medium gray  
 N31 H 7201—Taupe brown . \$14.84

*Arnel® triacetate and rayon* blended to look like fine worsted wool crepe. Hand wash separately.  
 V31 H 6227—Stone green (med.)  
 V31 H 6228—Deep blue. . . . . \$10.84



# Silhouettes designed for *Accessorizing*



**5** Multicolor Tapestry Jacket . . cotton and rayon. State bust small (30-32); medium (34-36); large (38-40) in. Dry clean. Shpg. wt. 1 lb. 6 oz.  
88 H 8921—Beige ground  
88 H 8922—Black ground . . . . . \$8.97

**6** Virgin Zephyr Wool Stole. Woven tweed effect. About 24x72 in. incl. fringe. Dry clean. Wt. 8 oz.  
88 H 8628—Gray and gold  
88 H 8629—Red and navy  
88 H 8630—Black and brown. . . . . \$4.97

**7** Leafy Crown Toque Hat. Rayon velvet. State purple iris; fuchsia rose; med. green; cocoa (med.) brown or black, each with green leaf tones. Fits 21 3/4 to 22 1/2 in. sizes.  
N78 H 2655—Shipping weight 12 oz. . . . . \$4.97

**8** Crystal, aurora borealis Pin and Ear Clips provide bright accents for any costume. 3-inch pin with safety catch. 1 1/4-inch semi-contour earrings. 10% Federal Excise Tax included.  
4 H 4537E—Pin, earrings. Shpg. wt. 3 oz. . . \$4.98

## The Sheath

Shown at right. Essentially a timeless silhouette, keeps the hour with a change of accessories. Slimness with softness achieved via deep shoulder folds. Carefully shaped over a lining of acetate taffeta. Back zipper. Dry clean.

Misses' sizes 10, 12, 14, 16, 18, 20. State size.

Rich Shantung . . 70% rayon, 30% silk.

N31 H 7300—Black                      N31 H 7301—Navy blue.

N31 H 7302—Light sage green

Shipping weight 12 ounces. . . . . \$13.84

Tissue-weight crepe of acetate and rayon.

V31 H 6229—Black

V31 H 6230—Taupe brown (light)

Shipping weight 1 pound. . . . . \$10.84